



One Monk Miniatures
FORUM HOARD

Figures and Coloring by: David Fernandez Catera ©2008



Zombie Cop 04

20mm base

©2008 D. Calenda



Zombie Cop 02

20mm base

©2008 D. Calenda



Zombie Cop 03

20mm base

©2008 D. Calenda



Zombie Cop 01

20mm base

©2008 D. Calenda

To assemble, cut out each row of figures. Score the **RED** line, fold, and glue the figures back to back. Cut out the figures with a pair of scissors leaving about 1/8 inch around the figure. Optionally, you can cut the figures to the black outline with a hobby knife. When cutting the figure out this way, cut from the front view of the figure, the rear view has a wider outline to cover any misalignments. These figures can be based using the supplied fold-up bases, or any slotted base of adequate size.



Jamie

20mm base

©2008 A. Steel



Hodder

©2008 A. Steel

Original figures by Adam Steel
(DARKMOOK)
©2008 All rights reserved

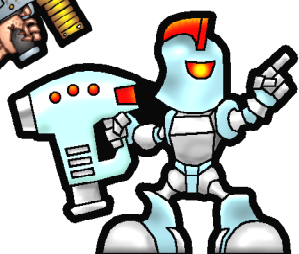
Coloring by: fwhitfield



Beastman

25mm base

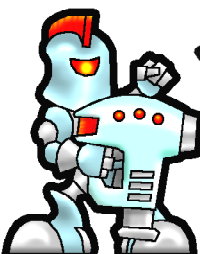
©2008 J. Hartman



Monobot 03

20mm base

©2008 S. Austin



Monobot 02

20mm base

©2008 S. Austin



Skelebot

25mm base

©2008 J. Hartman



Ratman

25mm base

©2008 J. Hartman



Shock Babe

25mm base

©2008 J. Hartman

Be sure to visit my website ONEMONK.COM for
PREVIEWS, SAMPLES, BASES, TIPS and TUTORIALS.