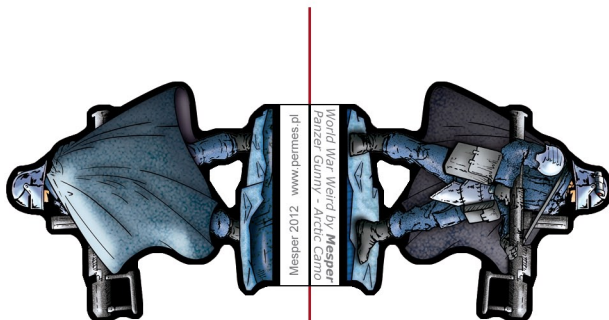
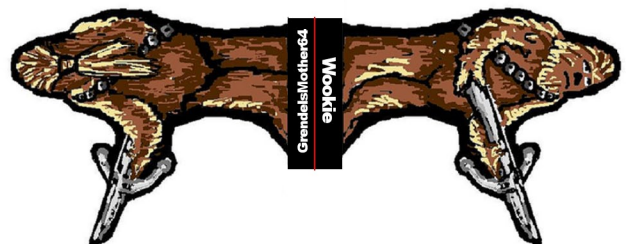
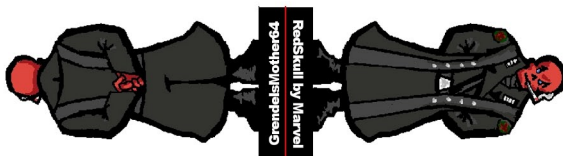
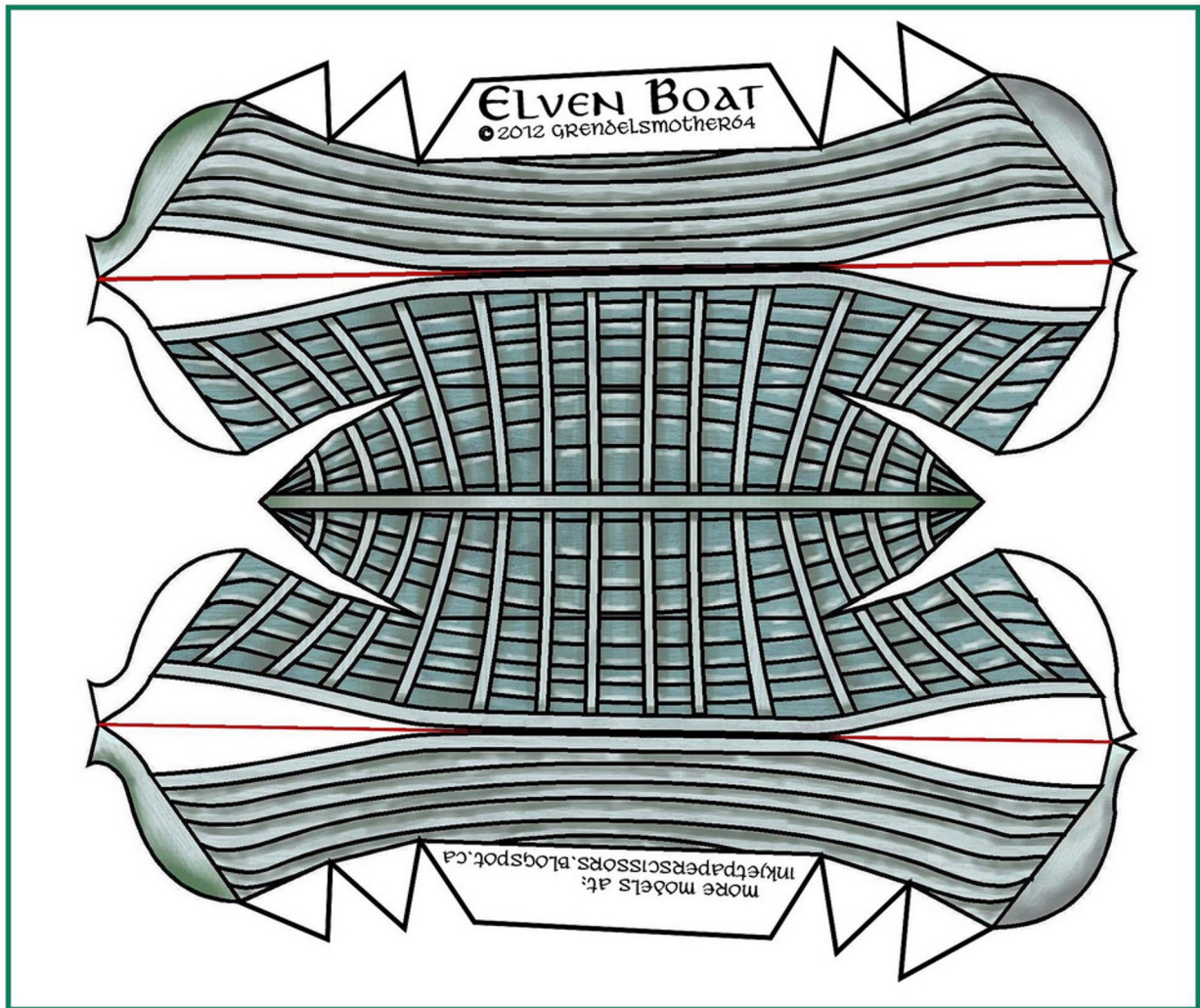


HOARD 1x3 - MAY AND JUNE 2x12

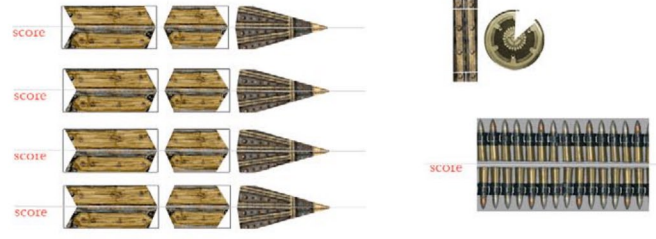
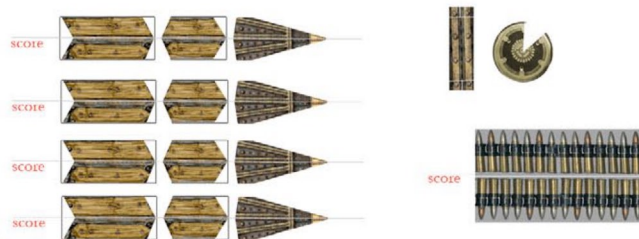
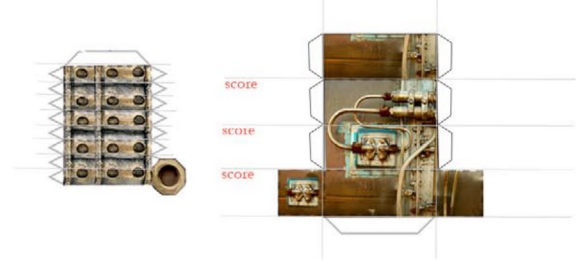
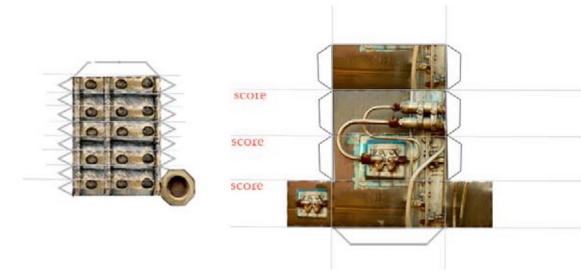


Feed this end into cutter

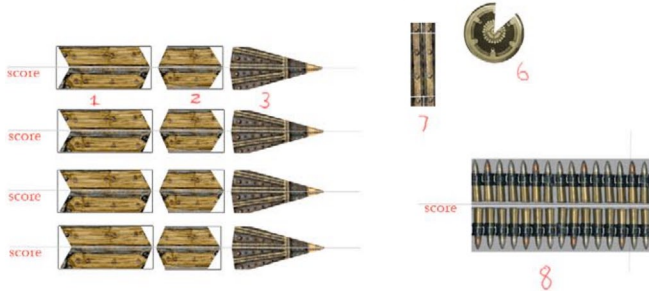
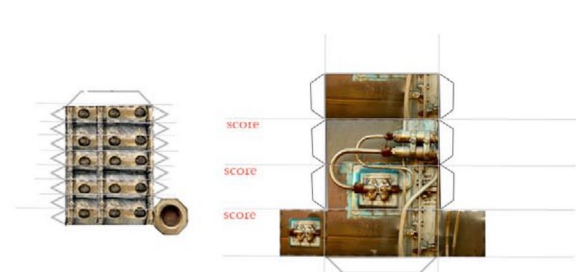
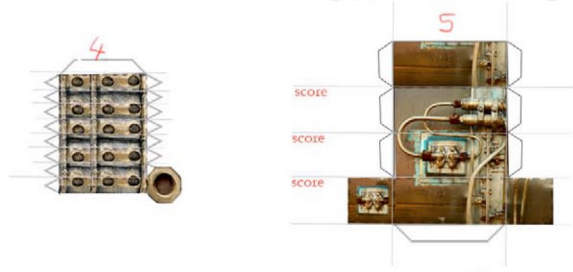
HOARD 1x3 - MAY AND JUNE 2x12

DESKTOP
WARGAMES.COM

The “Little Zerstörung”



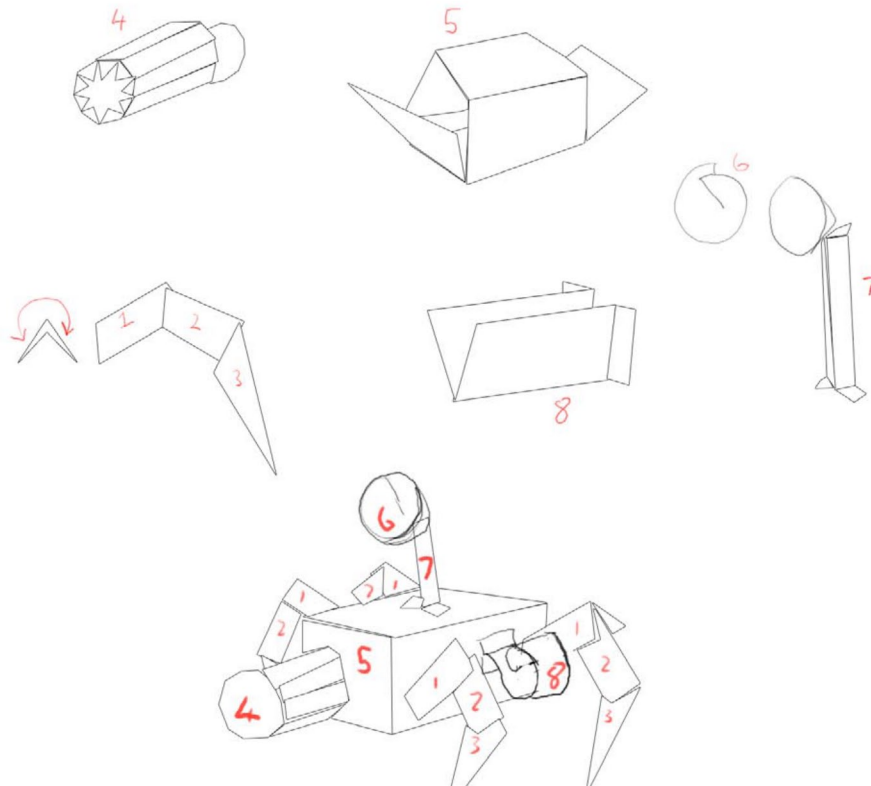
<http://www.desktopwargames.com> - - NOT FOR RESALE



Feed this end into cutter

HOARD 1x3 - MAY AND JUNE 2x12

<http://www.desktopwargames.com> - - NOT FOR RESALE



Tips From Sirrob01

- * Use Super glue or Super glue gel
- * Colour in black or grey the back of each leg piece and the dish
- * Make sure you build all 4 legs to the same angle, 90 degrees or greater angle will look best.
- * Use Super glue or Super glue gel

Feed this end into cutter