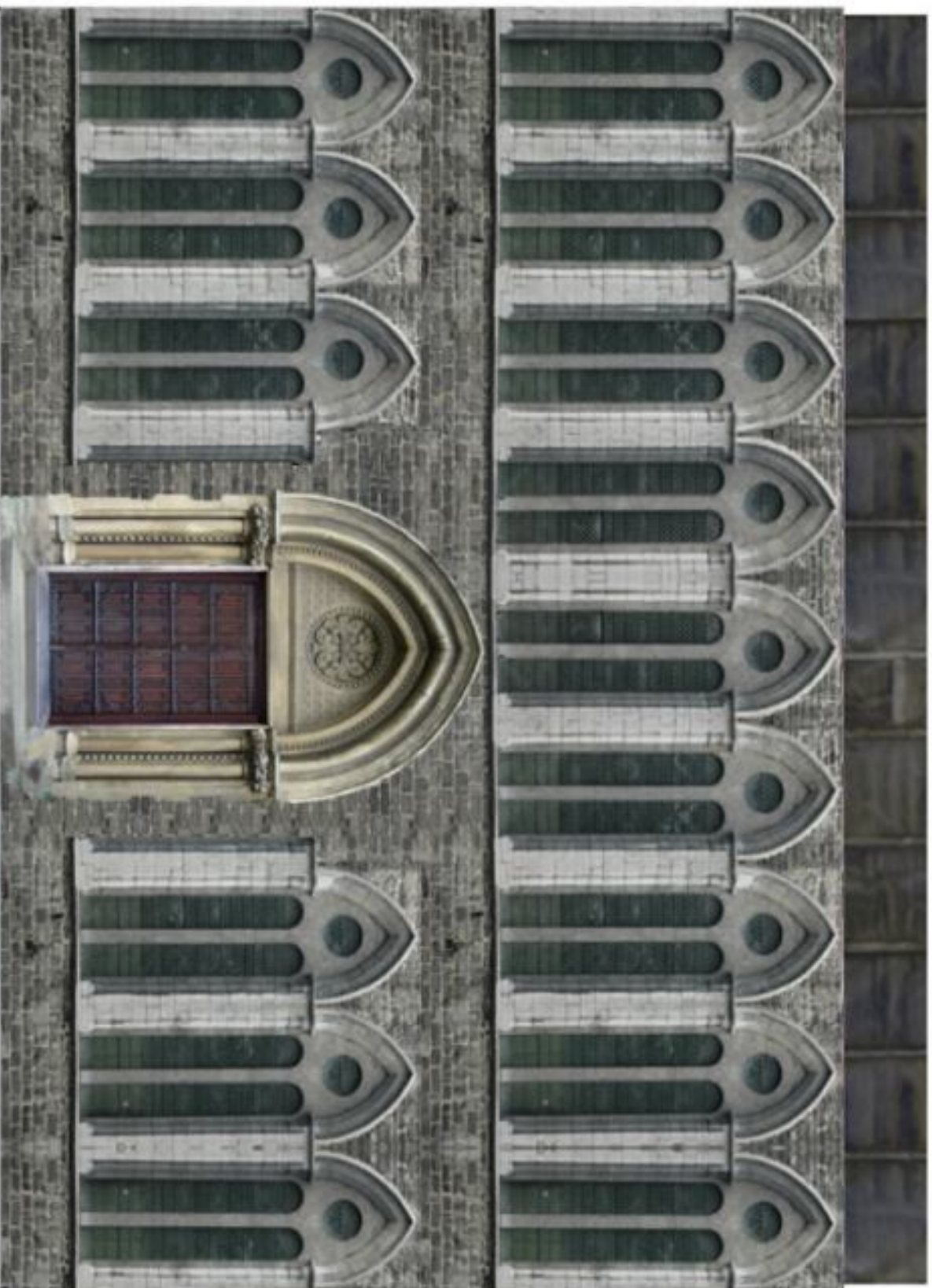


Sample Not to Scale.

These Flaps Folded  
Down onto Roof  
↓  
piece. Mod A



THIS IS NOT A GLUE TAB. **DO NOT GLUE**  
JUST BEND AT AN INWARD ANGLE TO HELP KEEP WALLS FROM BOWING INWARDS.

└─ 2cm Long

By Tommygun

Print X2 Times  
For Left and  
Right Sides

Mod A



These Flaps Folded  
Down onto Roof  
Piece.



2cm Long

THIS IS NOT A GLUE TAB. **DO NOT GLUE**  
JUST BEND AT AN INWARD ANGLE TO HELP KEEP WALLS FROM BOWING INWARDS.



These Flaps Folded  
↓ Down onto Roof  
Piece. Mod A



THIS IS NOT A GLUE TAB. **DO NOT GLUE**  
JUST BEND AT AN INWARD ANGLE TO HELP KEEP WALLS FROM BOWING INWARDS.


 2cm Long

By Tommygun

These Flaps Folded  
↓ Down onto Roof  
Piece. Mod A



THIS IS NOT A GLUE TAB. **DO NOT GLUE**  
JUST BEND AT AN INWARD ANGLE TO HELP KEEP WALLS FROM BOWING INWARDS.

 2cm Long

By Tommygun



Print X2 Times  
For Left and  
Right Sides

Mod B

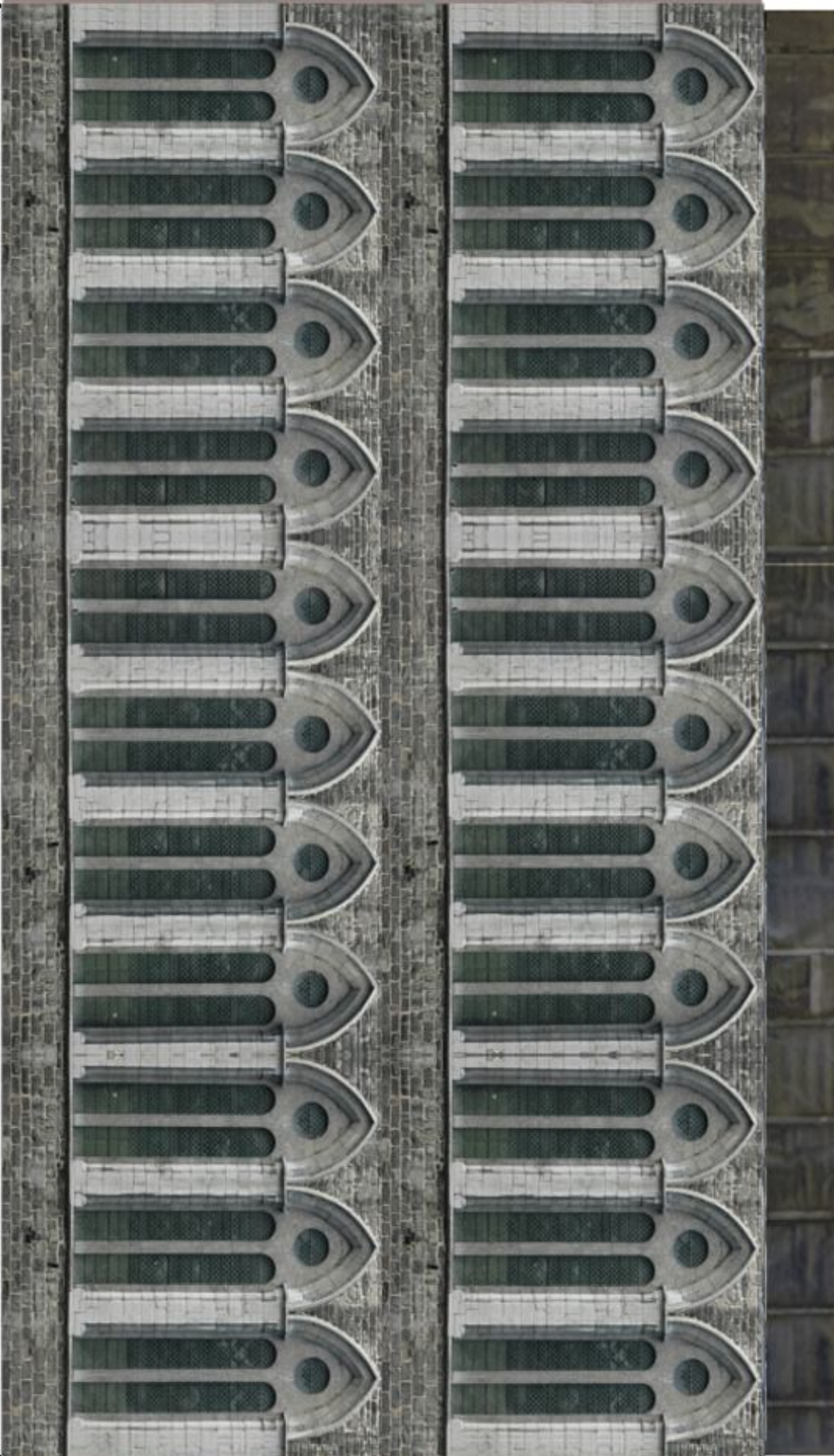


These Flaps Folded  
Down onto Roof  
Piece.

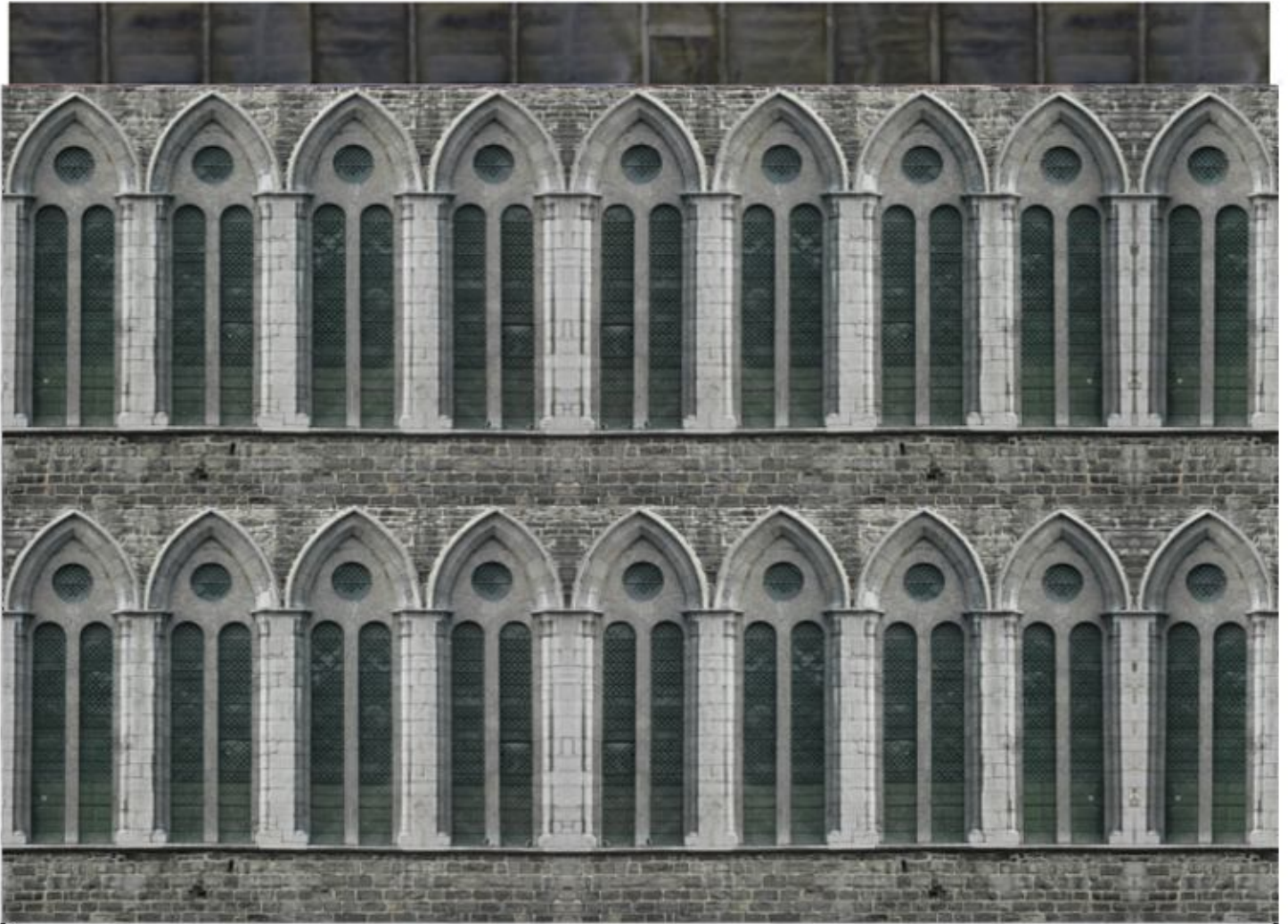


2cm Long


THIS IS NOT A GLUE TAB. **DO NOT GLUE**  
JUST BEND AT AN INWARD ANGLE TO HELP KEEP WALLS FROM BOWING INWARDS.



These Flaps Folded  
Down onto Roof  
Piece. Mod B



THIS IS NOT A GLUE TAB. **DO NOT GLUE**  
JUST BEND AT AN INWARD ANGLE TO HELP KEEP WALLS FROM BOWING INWARDS.

 2cm Long

By Tommygun



Print X2 Times  
For Left and  
Right Sides

By Tommygun

Mod C

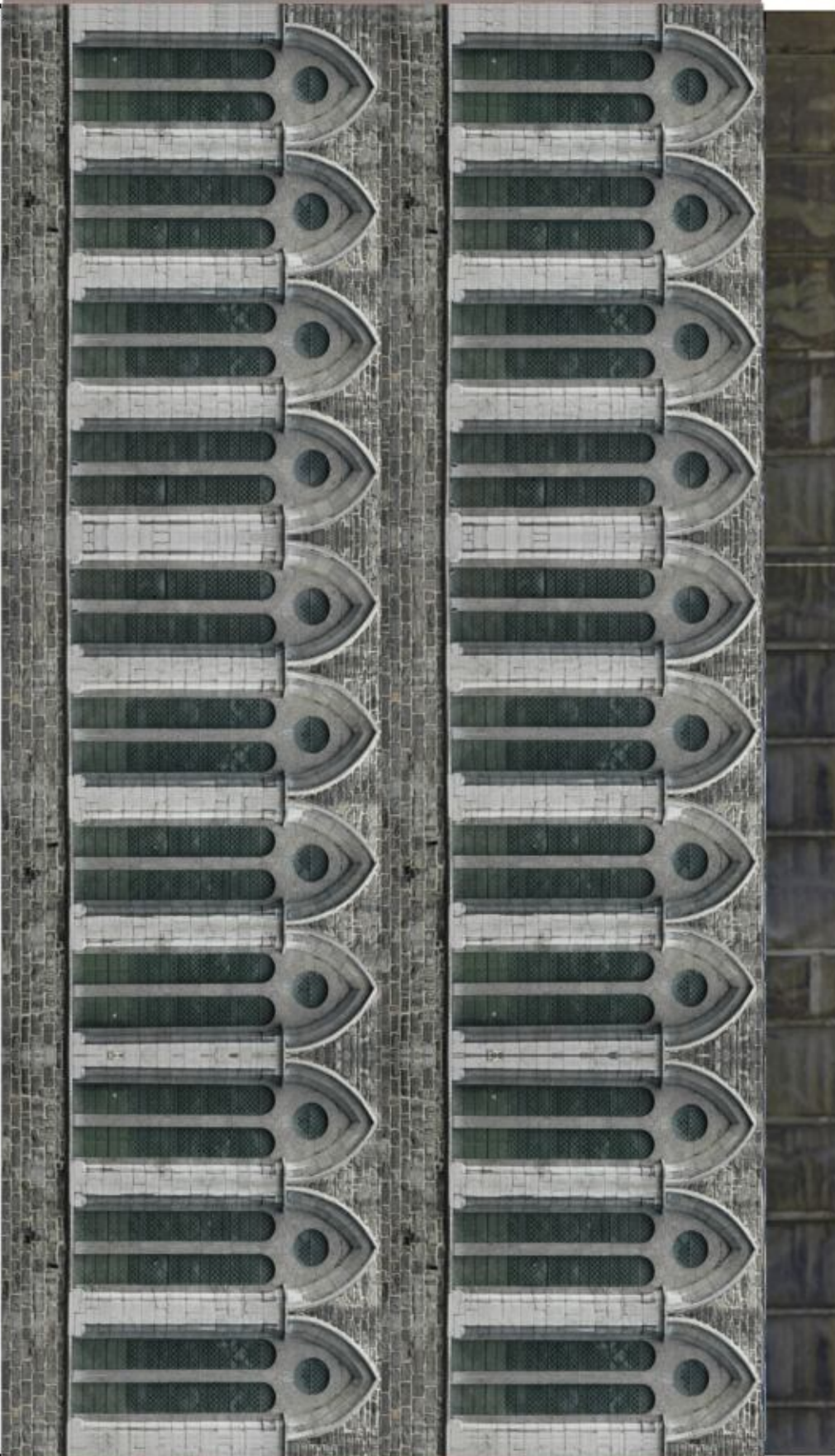


These Flaps Folded  
Down onto Roof  
Piece.



2cm Long

THIS IS NOT A GLUE TAB. **DO NOT GLUE**  
JUST BEND AT AN INWARD ANGLE TO HELP KEEP WALLS FROM BOWING INWARDS.




 2cm Long

Mod C



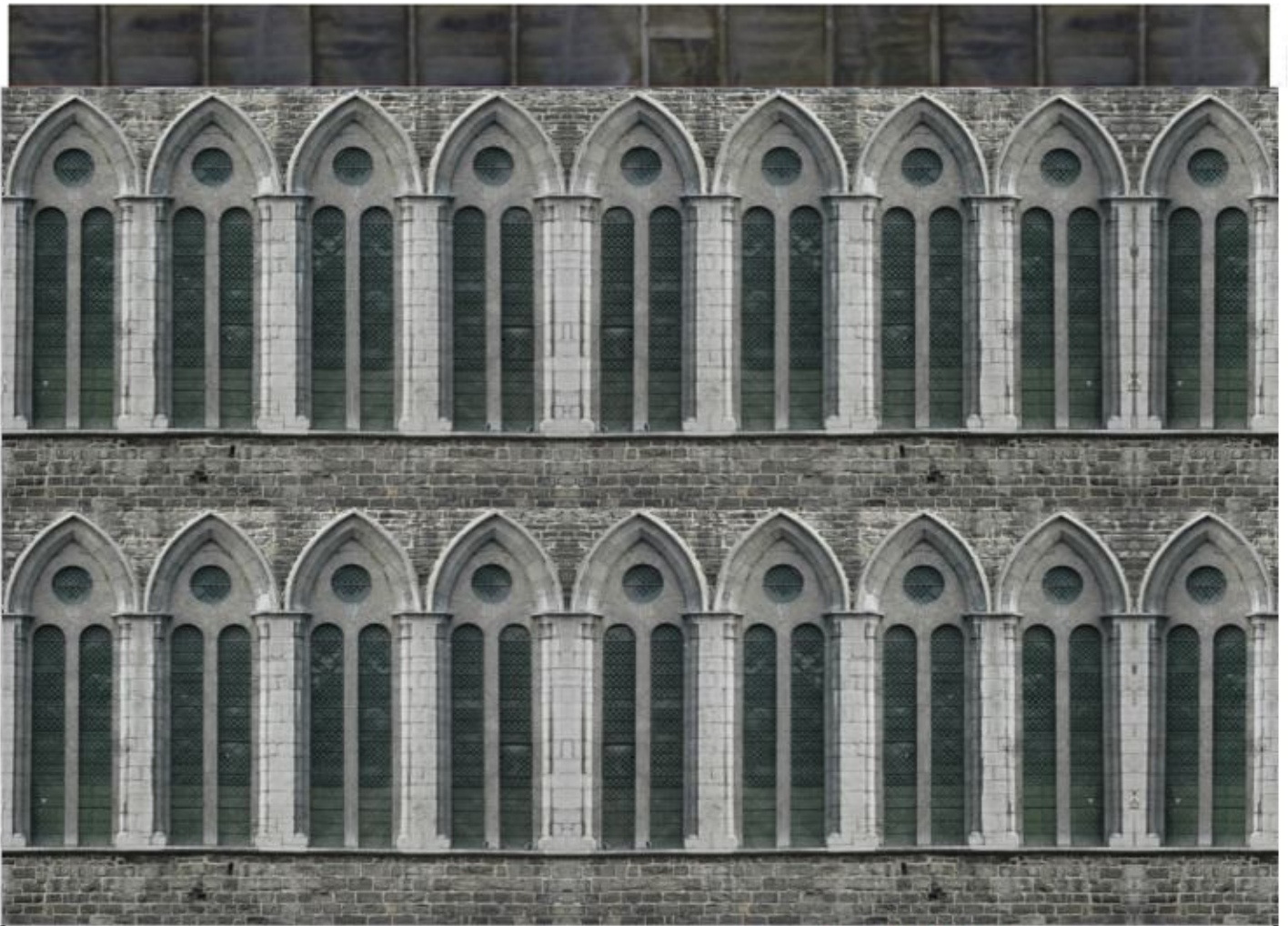
These Flaps fold Upward at 90 degrees and glue to building's wall.

Mod C





These Flaps Folded  
↓ Down onto Roof Piece. Mod C  
Piece.



THIS IS NOT A GLUE TAB. **DO NOT GLUE**  
JUST BEND AT AN INWARD ANGLE TO HELP KEEP WALLS FROM BOWING INWARDS.

 2cm Long

By Tommygun



2cm Long

These Flaps fold Upward at  
90 degrees and glue to  
building's wall.

By Tommygun



Mod A

Mod A







2cm Long

These Flaps fold Upward at  
90 degrees and glue to  
building's wall.



Mod A

By Tommygun





2cm Long

These Flaps fold Upward at 90 degrees and glue to building's wall.



Mod B







These Flaps fold Upward at 90 degrees and glue to building's wall.

2cm Long



Mod B

By Tommygun

Mod B

