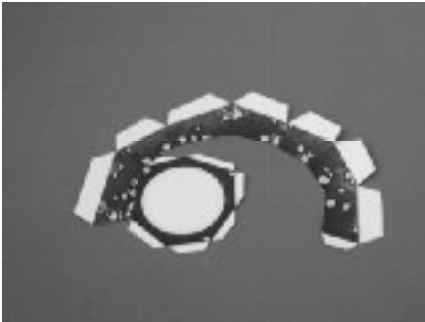


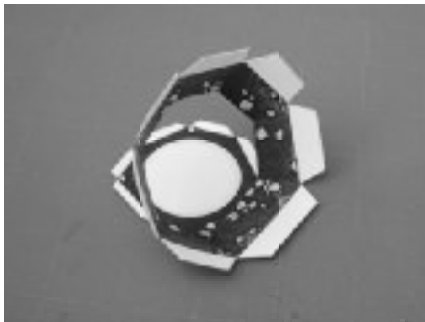
CRYPT WORM INSTRUCTIONS

Thanks for downloading my CRYPT WORM model. I hope you have as much enjoyment assembling the model as I had designing it. I have divided the instructions into the BASE and WORM. It's important to read all of the notes on each page of parts, and also to read through the instructions once before starting. I have done my best to ensure that the model will build correctly and look good by anyone with at least a moderate skill at modeling. Now let's build this Worm!

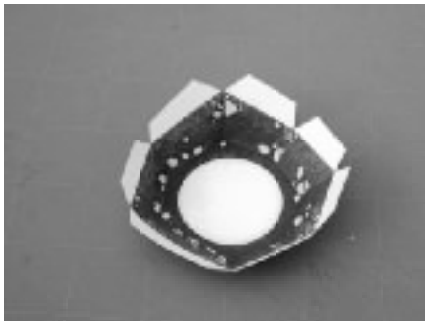
CRYPT WORM BASE



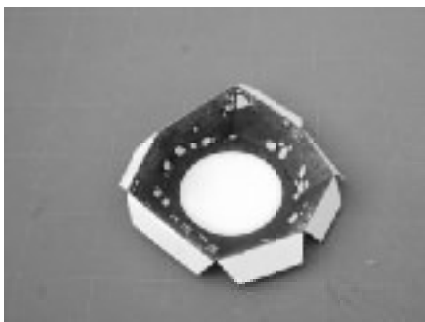
After printing, score and trim out all of the areas indicated on the parts before cutting the part from the page. Once the parts are cut from the page take the INSIDE BASE part and pre-fold all of the tabs and the scored lines around the wall section.



Take the wall section and carefully bend it around with the print side in, and glue the tab to the backside of the wall.



Next, fold the bottom of the INSIDE BASE bottom tabs upward slightly and place glue on all of the bottom tabs. Lower the wall section down onto the tabs, taking care to keep the part aligned. Let the part dry fully before finishing the part.



When the part is dry, fold the upper tabs downward. You are now ready to do the next part.

CRYPT WORM INSTRUCTIONS



Take the OUTSIDE BASE part, and pre-fold all of the scored corners and the tab.



Bend the part around with the print side out, and glue the tab to the back-side of the part.

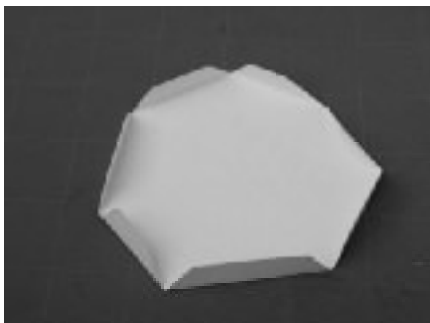


Carefully line up the OUTSIDE BASE part over the INSIDE BASE part. To help you align the two parts, there is one section of the parts that is longer than the rest. These two sections are also the shortest in height. Once you have the parts in the correct alignment you can begin gluing the OUTSIDE BASE sections to the INSIDE BASE tabs. Glue one tab at a time, and work from one tab to the next. This will help insure that the parts will stay aligned. Do not worry if the bottom is uneven, this will be corrected later. You are now ready for the next part.

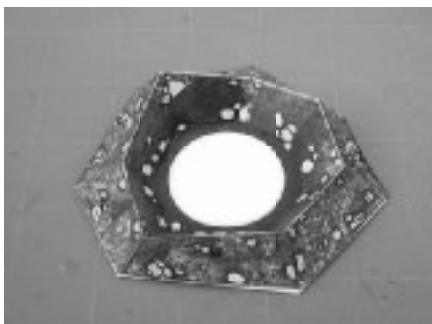


This is the BASE BOTTOM part. Once cut out, pre-fold all of the tabs.

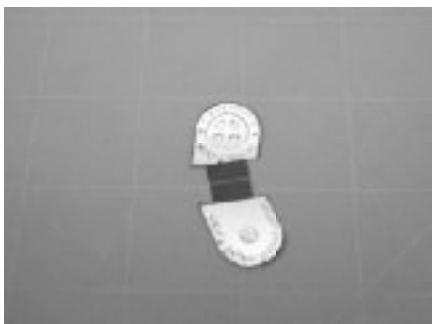
CRYPT WORM INSTRUCTIONS



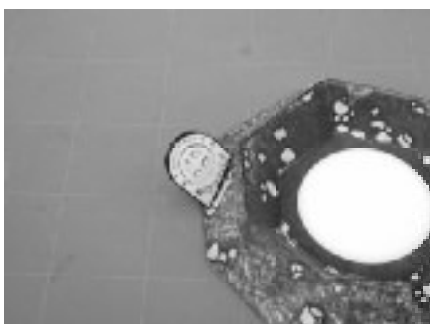
Place the print side down, and fold all of the tabs up and in.



Align the the BASE BOTTOM with the long edge of the upper parts. When you have them aligned, place glue on all of the tabs and place the upper part onto the BASE BOTTOM. It is helpful to hold the part flat, or use a weight to hold everything in place while the glue dries.



Cut out and score the TOMBSTONE. Fold and glue the TOMBSTONE back to back.

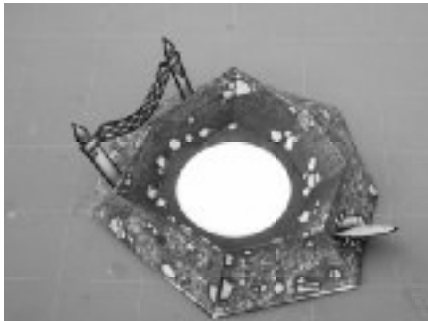


Glue the TOMBSTONE into the long slot on the side of the base. The TOMBSTONE can face either direction.

CRYPT WORM INSTRUCTIONS



Score and cut out the CHAINED PILLARS. Fold over and glue back to back.



Slip each PILLAR into the two small slots on the side of the base. You can slide the PILLARS in as deep as you want. When you are happy with the placement, glue the CHAINED PILLARS in place.

That completes the CRYPT WORM BASE. You are now ready to assemble the WORM.



CRYPT WORM INSTRUCTIONS

The WORM is made up of curved segments. Of special note are the faint cut lines on the top most parts of each body segment. It is very important to cut these, they form the glue tabs for the segment that overlaps. The other special note is the position of the UPPER and LOWER body sections. It's important to get the parts glued on in just the right position. With these notes in mind, you are now ready to make the WORM.

LOWER BODY



Cut out the LOWER body section. Score only the bottom tabs. make sure to cut all of the faint tab lines on top part of the body segments.



One at a time, curve each of the body segments around and glue to the opposing tab.

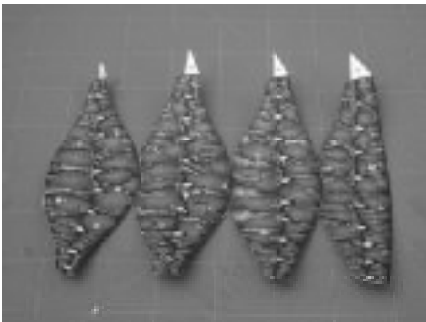


Carefully fold the top segment over the bottom segment until the gap between them is completely closed. Glue the two segments at the smallest area where the the two segments meet, and let dry. Once dry, fold all of the segment tabs outward to be flush with the top segment and glue. The LOWER BODY is now done.

CRYPT WORM INSTRUCTIONS

UPPER BODY

Of special note on the UPPER BODY are the cut tabs on the top of each segment. The body segment that is the bottom is the one with NO cut tabs. Also the top most segment has cut tabs, but is used for the NECK part, and can be ignored for this part of the assembly.



Cut out the UPPER body section.
Make sure to cut the faint tab lines.



One at a time, curve each of the body segments around and glue to the opposing tab.

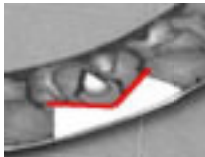


Now glue each segment over the other, starting from the bottom. The bottom is the segment that has no tab cuts on the bottom. fold each segment over the other until the gap is fully closed, and glue at the smallest part of the segments, and let dry. Once dry, fold all of the inner tabs out to be flush with the segments on top of it, then glue these tabs. This will make the model stronger. This completes the UPPER BODY.

CRYPT WORM INSTRUCTIONS

NECK

The NECK part transitions from the UPPER BODY to the MOUTH parts. Of special note are the uncolored areas with the "V" shape. Each "V" shape must be cut to allow for the JAWS to fit. Cut a notch in each "V" fully from one side to the next. Also of note is the alignment of the NECK on the BODY. The overlap of the glue tab on the NECK should line up with the overlap of the BODY, which is on the inner most area of the BODY.



Cut out the NECK part, and cut slots in each "V" area where indicated in this photo.



NECK alignment, should follow the inside of the BODY part overlap edges.



The NECK part is ready to fold.



Bend the part around and glue the tab under the part, and let dry.

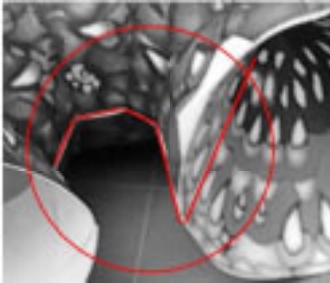


Slide the small end of the NECK part onto the UPPER BODY, over the cut tabs. The NECK should cover the tabs completely. Once in place, glue a couple tabs and let dry. Once dry, fold the rest of the tabs outward to be flush with the inside of the UPPER BODY and glue the rest of the tabs. The NECK is now done.

CRYPT WORM INSTRUCTIONS

MOUTH

The MOUTH part is simply a dished circle. Of note on the MOUTH is the placement of it when gluing to the NECK. The proper alignment of the MOUTH is to have the overlap of the tab be faced down and align with the same tab overlap of the NECK part.



This diagram shows how all of the overlap/tab areas line up. It's important to always check the alignment and fit of the parts before gluing.



Cut out MOUTH part. Do NOT score the tab, this will help maintain the shape of the dished circle.



Place glue on the tab. Take the MOUTH part by the outside edges of the open ends and bend it around until the tab is completely covered, and let dry.



Align the MOUTH part to the neck by matching up the overlap/tab area of the MOUTH with the same overlap area of the NECK. Once you have determined the correct alignment, apply glue to the the very outside edge of the NECK part, and place the MOUTH over it, adjust as necessary to maintain an even edge with the NECK part.

CRYPT WORM INSTRUCTIONS

UPPER-LOWER BODY

Of special note on the UPPER-LOWER body, is the importance of test fitting the two halves before gluing. There is some latitude in the way that you can pose the WORM, but I would not suggest anything extreme.



Take the LOWER BODY part and place upright. You need to adjust the cut tabs on the top segment to accept the UPPER BODY. Take the top most tabs and fold them inward slightly, starting from the center, and doing two tabs to each side. Now you need to flare out the bottom most cut tabs, again start with the center tab and the two to either side.



Now lay the UPPER and LOWER BODY parts in front of you. Take the LOWER BODY part and fit it into the UPPER BODY part. The two parts should be curved in the opposite directions, as pictured in the photo.



Once you have the alignment set, remove the LOWER BODY part, and apply glue to all of the cut tabs and reinsert the LOWER BODY into the UPPER BODY and let dry.

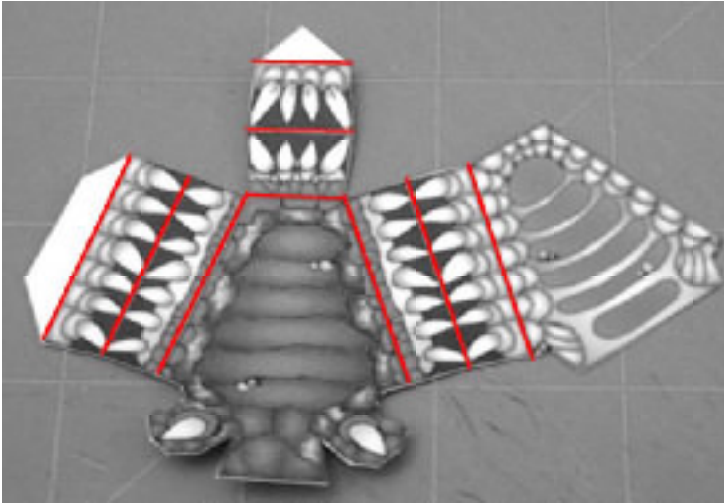


Once the part is dry, fold all of the bottom base tabs in. This completes the BODY.

CRYPT WORM INSTRUCTIONS

JAWS

Of special note on the JAW parts are the teeth, and inner glue tabs. The part is designed to be folded onto itself for the inside and outside of the JAW. The teeth are done as a solid part, and will need to be trimmed after gluing. It's important to let the teeth parts dry before cutting the teeth. The inner glue tabs are used to glue the inside of the JAW to itself. It's important to only glue the inside of the JAW to the glue tabs. This will keep the part flexible, and allow it to bend slightly when glued to the BODY.



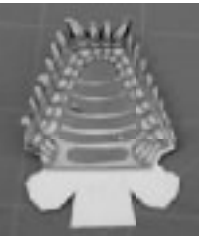
Cut out the JAW parts, and score where indicated in RED. Once all of the fold lines are scored, it's important to pre-fold these lines. This will make the part easier to work with in the next steps.



Fold the teeth areas, and glue back to back. DO NOT glue any other areas. You only want to glue the teeth to each other. Once all of the teeth areas are glued, let them dry completely. Repeat for all four JAW parts.



Lay the part flat out with the outside of the JAW facing up. Now carefully trim away all of the black area around the outside of the teeth. You can leave a small outline of the black if you wish. Repeat for all four of the JAW parts.

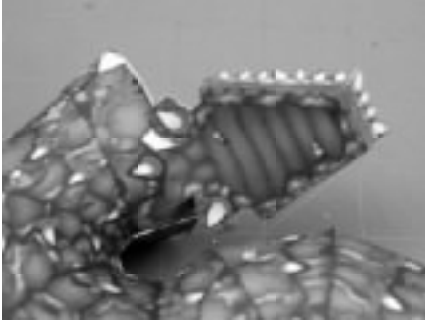


Flip the part over to the inside of the JAW. With this step you want to glue down the inside of the JAW to the two glue tabs on the inside of the teeth. Place glue only on the glue tabs, and fold the inside JAW area down on top of them. Next, apply glue to the inside corners of the front and side teeth and fold the teeth up until they meet, and let dry. Repeat for all four of the JAW parts. The JAWS are now done.

CRYPT WORM INSTRUCTIONS

COMPLETING THE MODEL

Of special note when completing the model are the alignment of the JAWS. The JAWS are designed to be kind of flexible so that they adapt to the curve of the NECK. The JAWS are also designed so that the inner part of the JAW overlaps the MOUTH area. This gives the MOUTH and JAWS a seamless look.



Insert the tab at the rear of the JAW into the "V" slot of the neck. Make sure the JAW tab goes all the way in. Apply glue to the inside surface of the two claw parts to either side of the JAW tab, and press them down onto the neck, let dry.



Adjust the inside of the JAW to overlap the MOUTH part.



Repeat for all four JAWS, and let dry completely.



Apply glue to the bottom tabs of the BODY, and place on the BASE in any direction, over the circle in the middle of the base, let dry. This completes the CRYPT WORM model.

CRYPT WORM INSTRUCTIONS

FINISHED!



Your CRYPT WORM model is finally done! I hope you have enjoyed building the model. This is just one of many models and miniatures I offer. Be sure to look for all of my models and miniatures at all of the popular retailers.

Visit my web site at <http://www.onemonk.com> for my complete catalog of designs. You will also find a selection of FREE models and miniatures, as well as sketches and preview models of forthcoming designs.