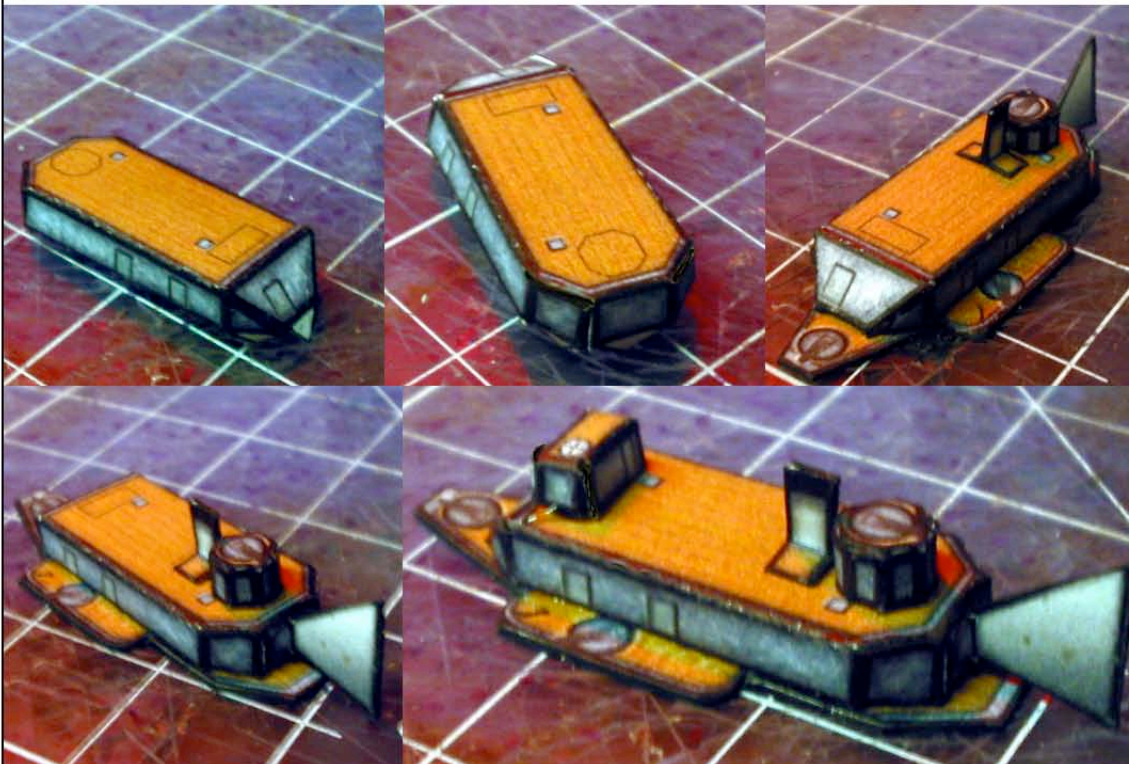


## Imperial Russian Czarina class gunship

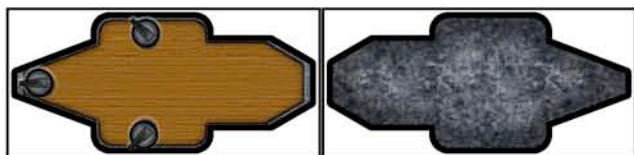


Hokay, these are the instructions for a glorious Imperial Russian Aeronaval gunship, in 1/600th scale...If it were actual size we would rule the world! No one listens to me so we just keep building these small things that wouldn't even conquer the French! Bah! It's always the same; the decks, smokestacks, and fins get folded over and glued. The excess paper is cut away. The main cabins fold up one end at a time and then it's glued to the deck. You can cut out a slit for the smokestack to poke through or you can glue it straight to the deck. The Tailfin/rudder gets glued to the back of the cabin. The stern turret is a standard octagonal box and the bridge is a standard rectangular box- you can cut off the base tabs and just put down a thin line of glue instead, this works better for some people. There are now 'open' guides to indicate placement of pieces of corresponding shape. Don't forget to attach the compass house to the bottom of the hull, you'll see an open guide, look harder, then glue the compass house box to it, the window goes forward. Then all you need to do is pick a flight base and off you go! See, it's easy, just like the others...and small. Ah well, someday!

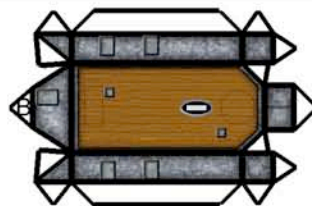
- Eric R. Brown 4/01/2006 [squirmydad@yahoo.com](mailto:squirmydad@yahoo.com)







Deck



Main Cabin



Cabin



Compass House



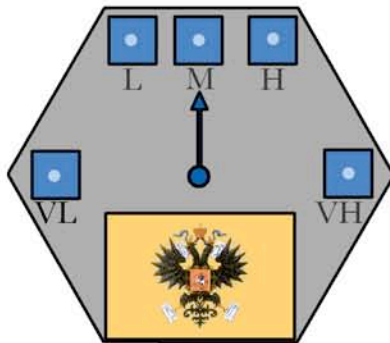
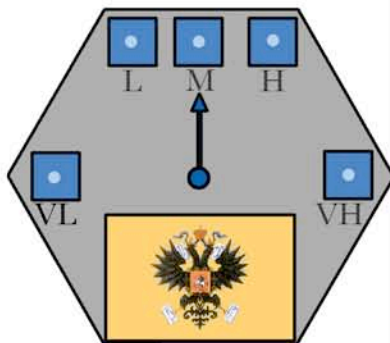
Stern Turret



Smokestack

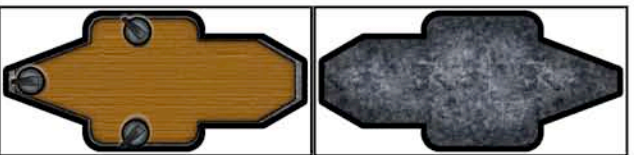


Tailfin

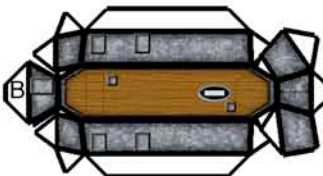


Russian Aeronaval 'Czarina' and 'Alexi' class gunships

Eric R. brown 03/31/2006  
squirmymdad@yahoo.com



Deck



Main Cabin



Cabin



Compass House



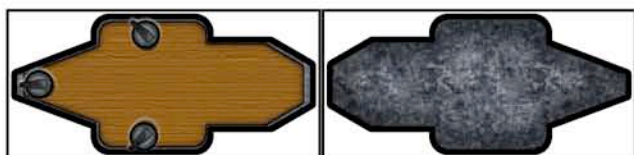
Stern Turret



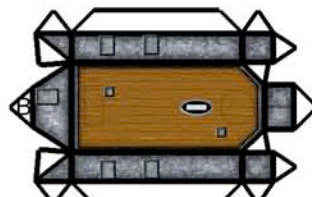
Smokestack



Tailfin



Deck



Main Cabin



Cabin



Compass House



Stern Turret



Smokestack



Tailfin

