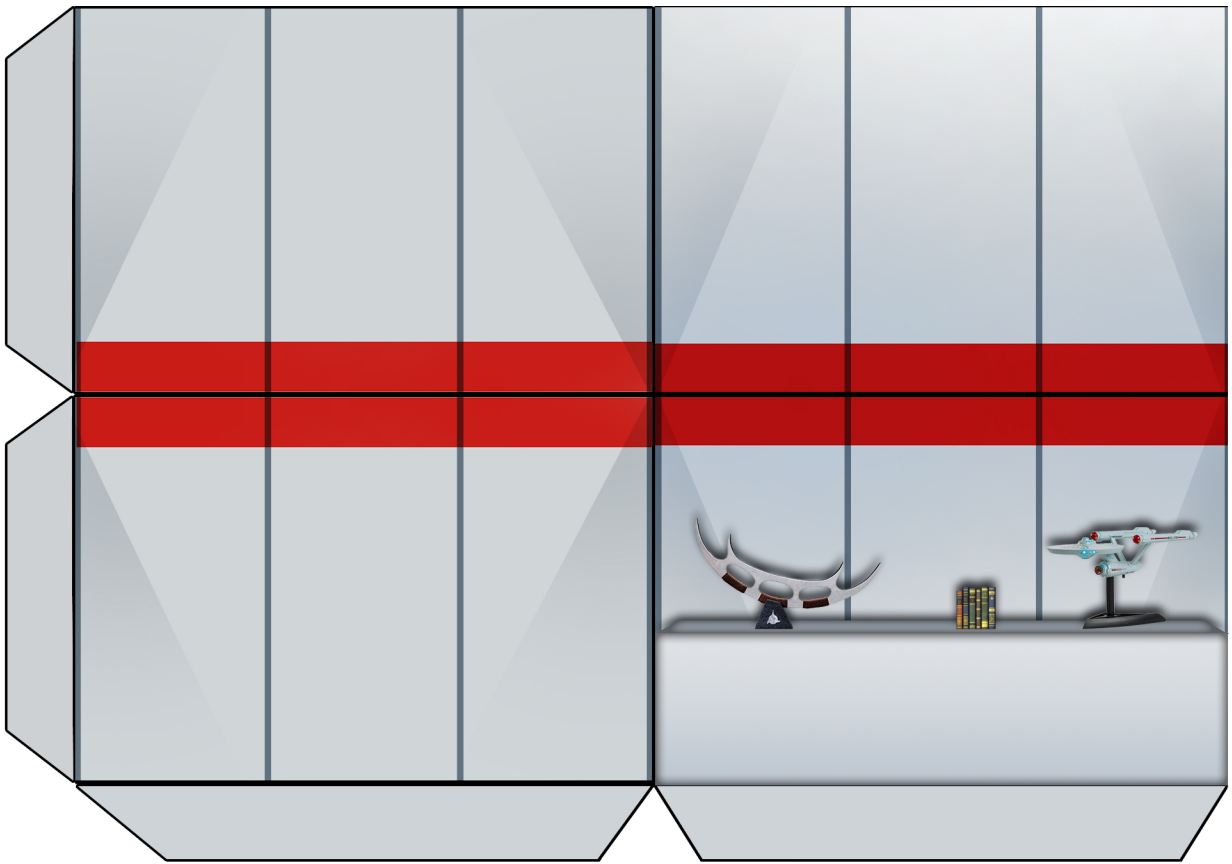
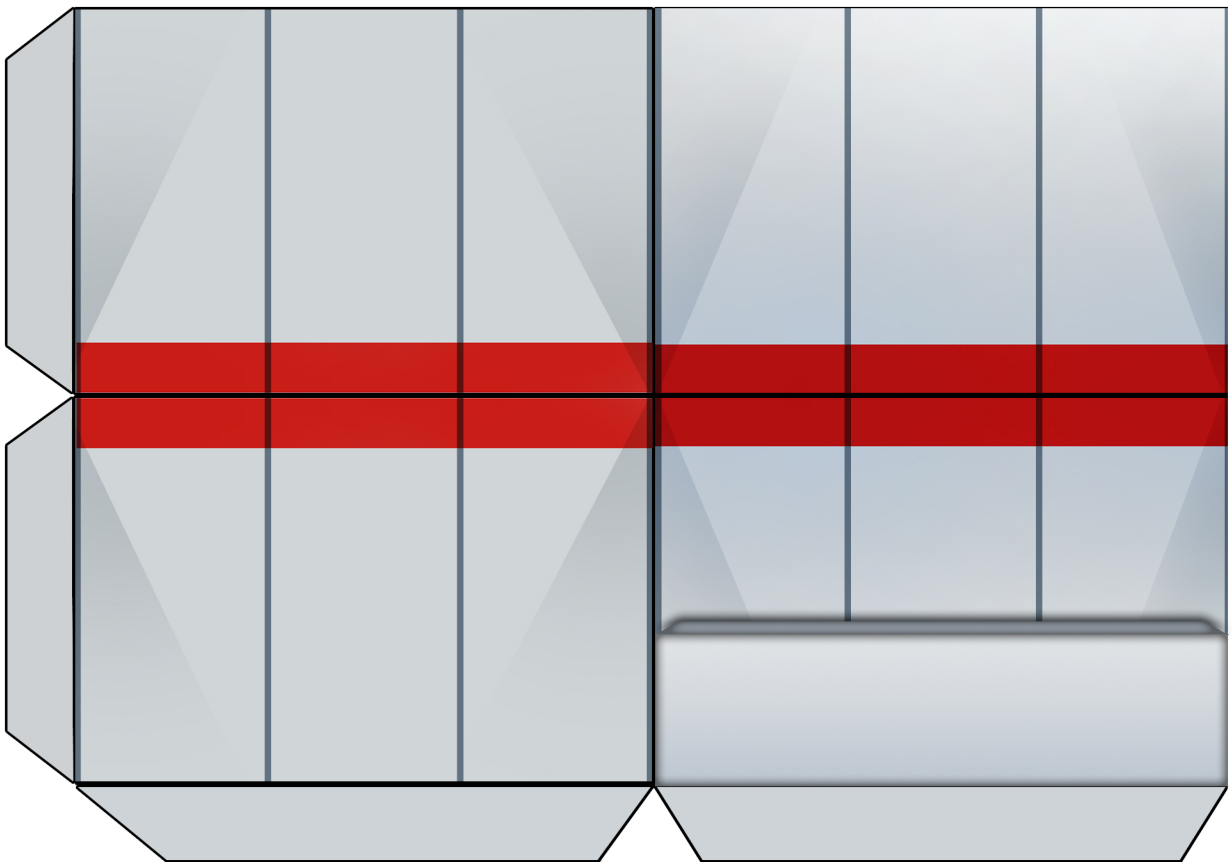


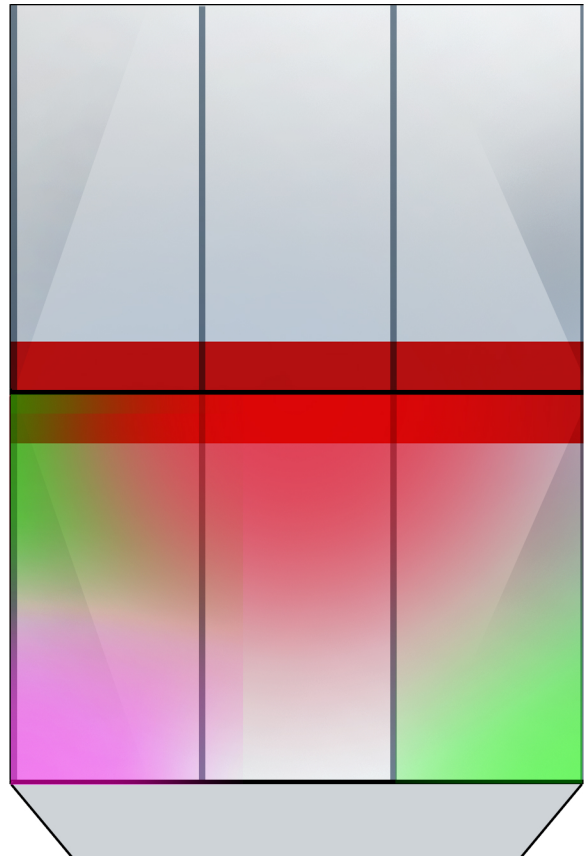
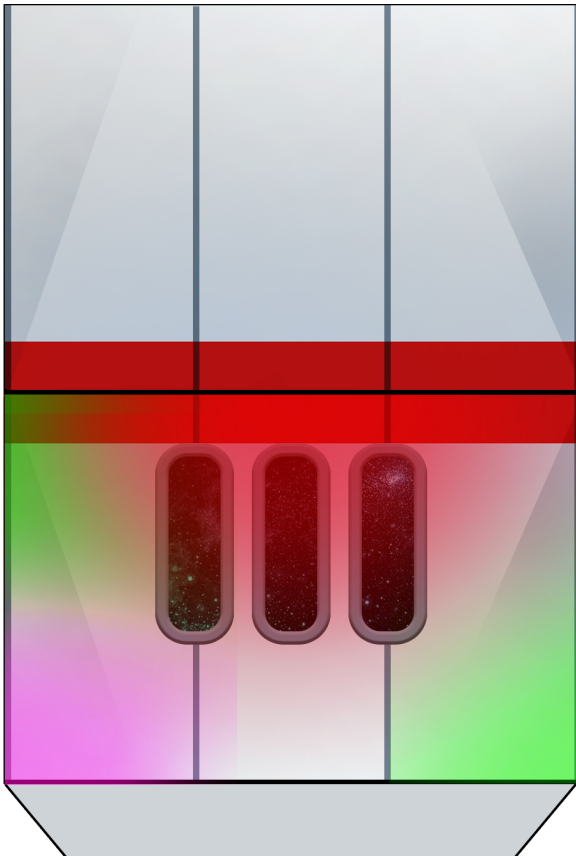
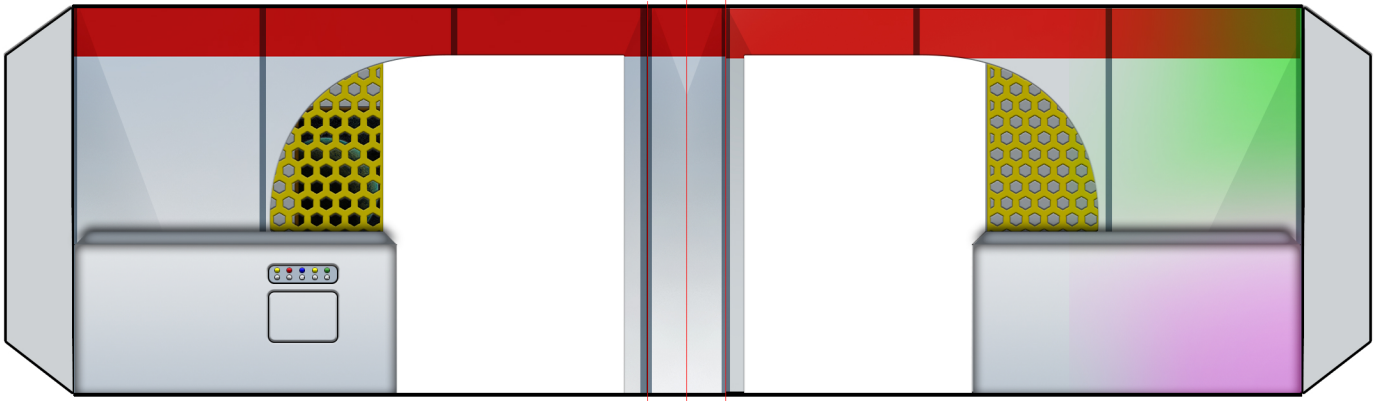
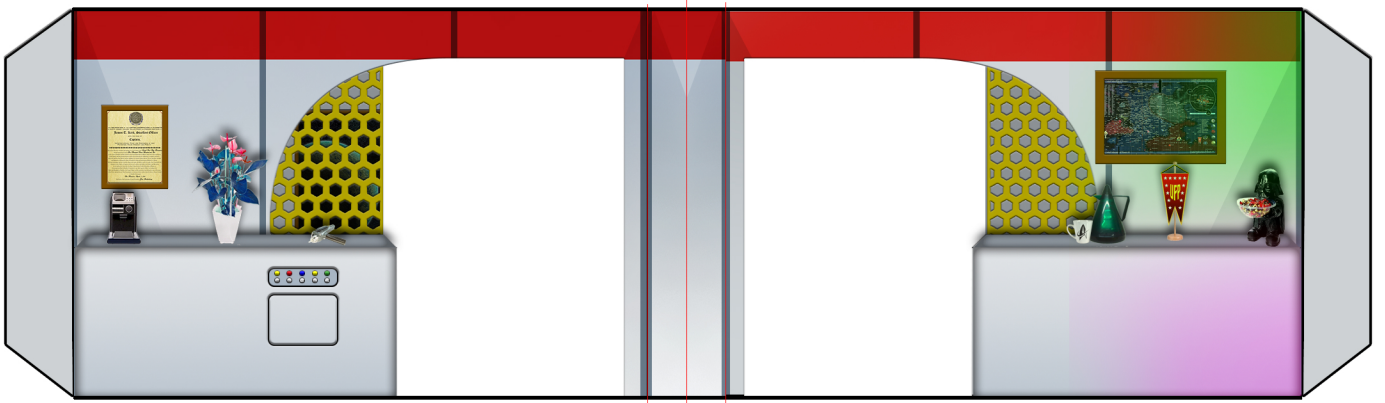
**WnMHGB** - Modular Starship/Space  
Station Corridors and Rooms

- Quarters -

for use with 28 to 32 mm miniatures







# Furniture Assembly

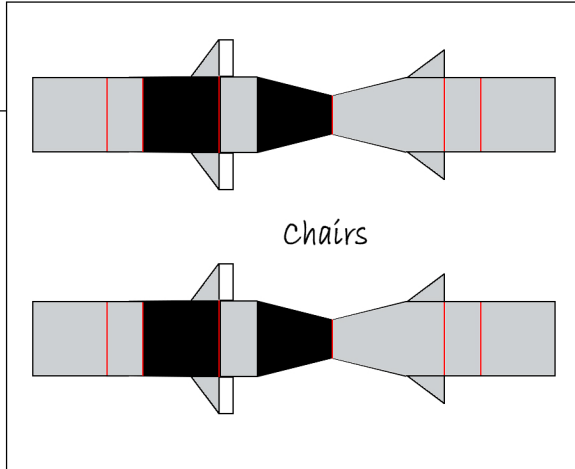
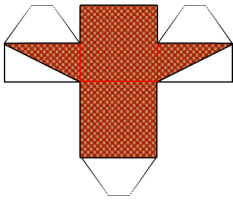
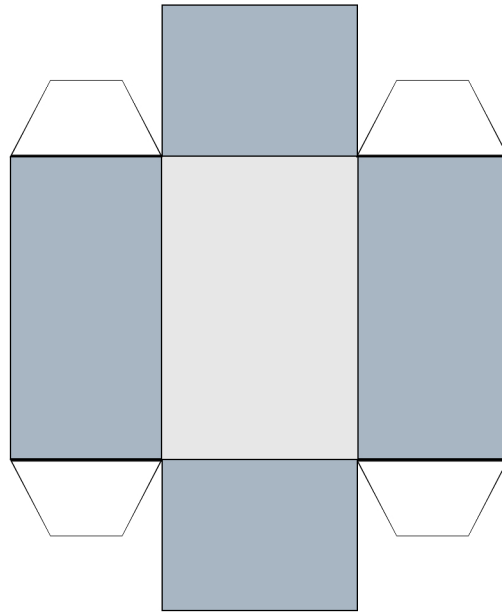
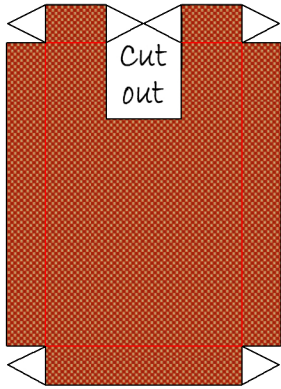
Bed: Cut out the parts. Build the box first, then the pillow, and finally the blanket. Glue the pillow into the blanket. You can either glue the blanket to the box or use it as a lid, creating storage space for flat minis.

Computer: Build monitor, cut out the small white triangle in the bottom. Build the stand. Plug monitor onto stand.

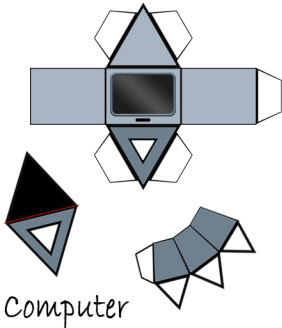
Chairs: Simply fold the body of a chair along the red lines. The small glue flaps belong to the triangle side parts. Fold the triangles with the flaps up and glue the flaps in between the front and back of the chair's back rest. Fold the outer triangles forward and glue them to their counterparts. Being a standee, the chair needs a base.

Desk: Fold the side parts under and glue them together, so that the grey part runs down the middle. Fold the glue flaps outward and glue them to the fold down upper and lower end. Trim off all white edges.

Single Bed

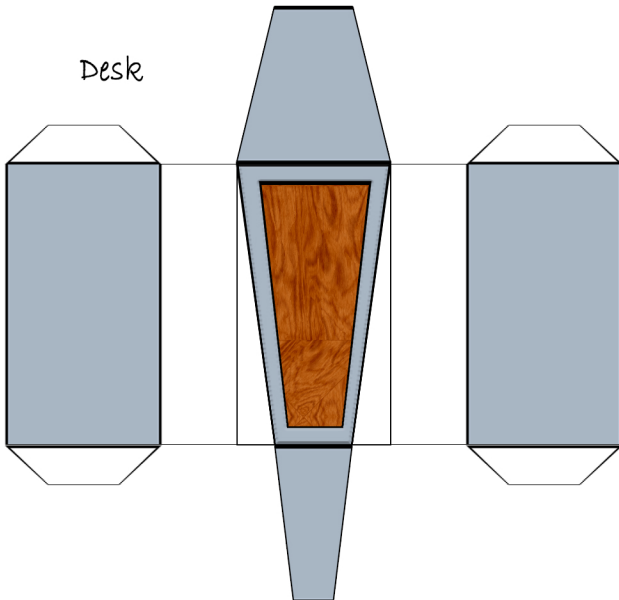


Chairs



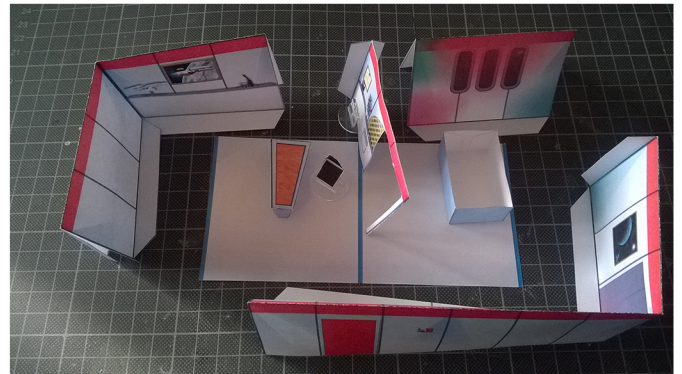
Computer

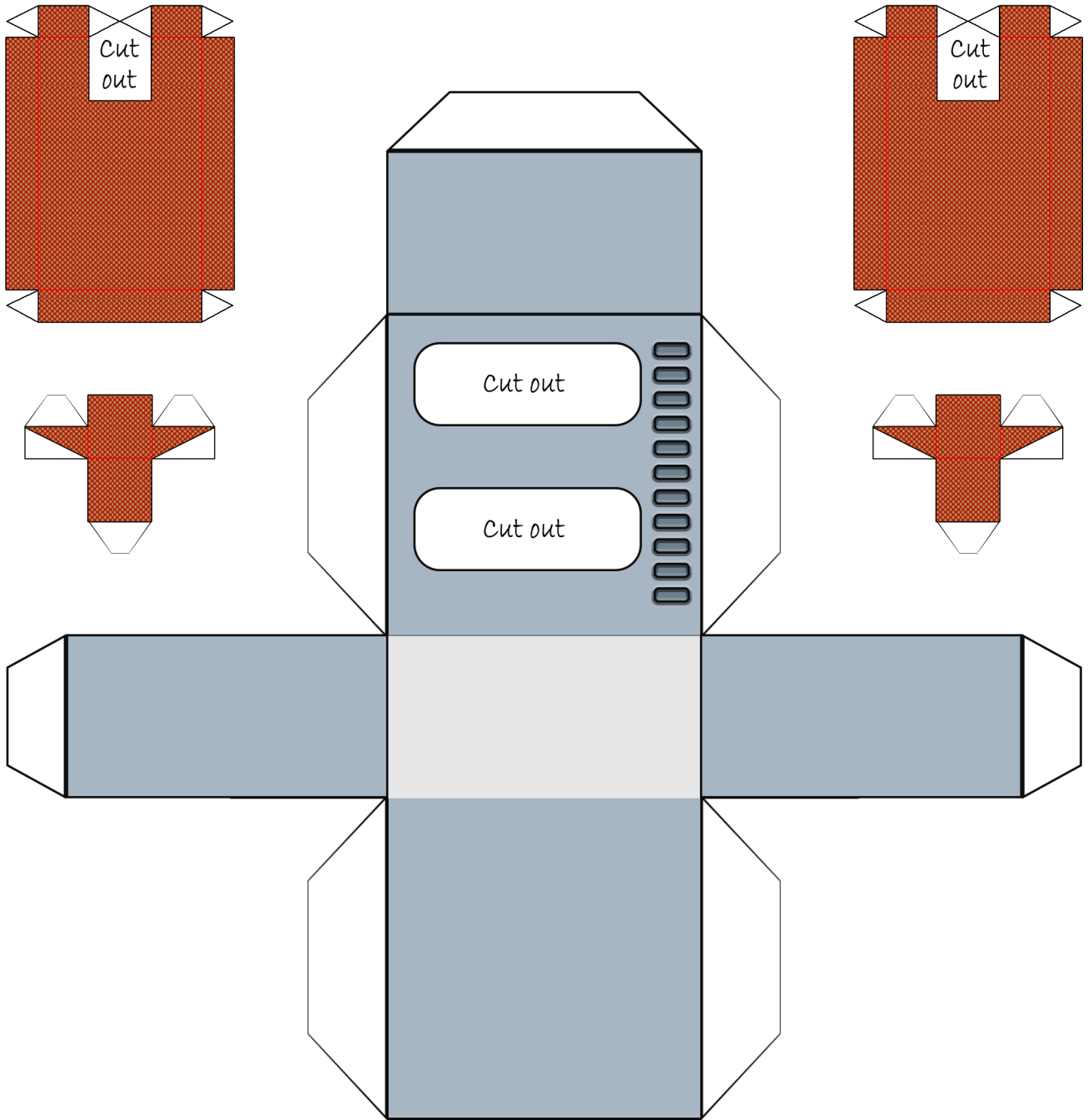
Desk



# Room Assembly

Please note that depending on the thickness of your room's floor, you will have to trim the lower end of the dividing wall.





## Bunk Bed Assembly

Cut out the pieces and build the pillows and blankets first. Then build the box frame the following way: Fold up the front and sides, and glue them together. Then glue the blankets into the open box with the upper edge of the blankets at the same height as the lower edge of the front cut-outs. Only glue the blankets to the front part of the box, not to the sides. Fold the back of the box up. Put glue on the flaps of the back (to glue it to the inside sides of the box) and to blanket edges facing the back of the box (to glue the blankets to the back). Close and glue the upper lid of the box. Done!