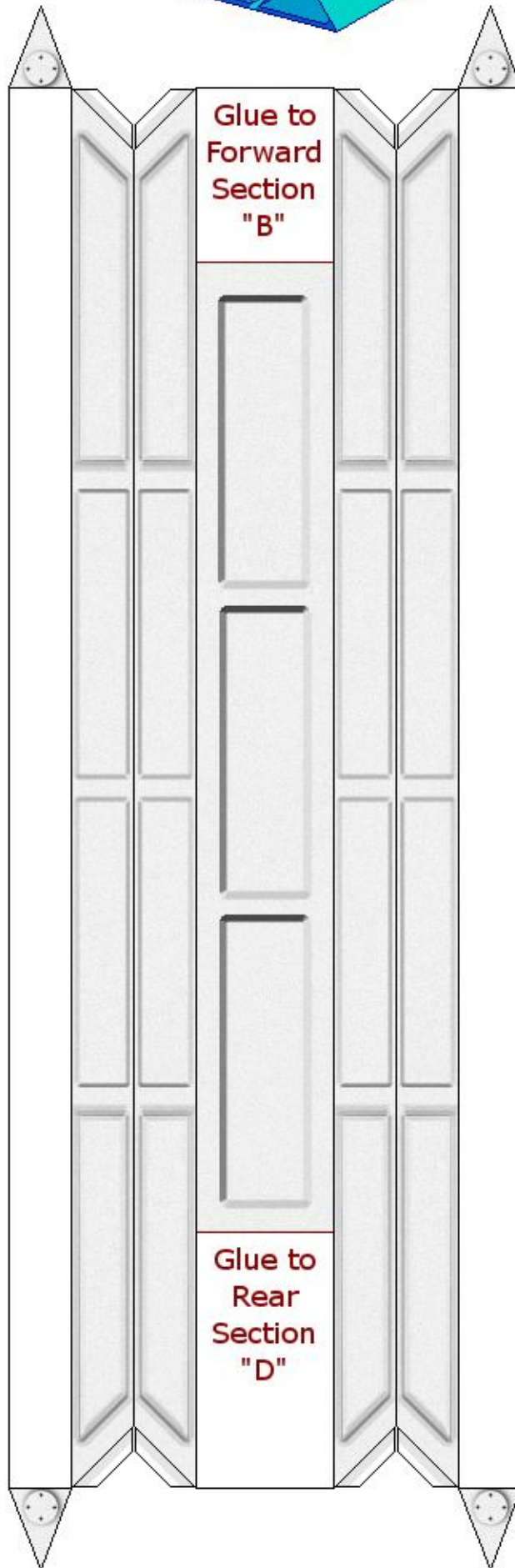
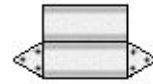
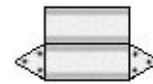
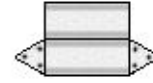
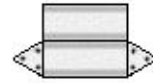
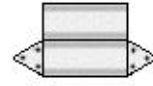


Fold to form
two Triangles



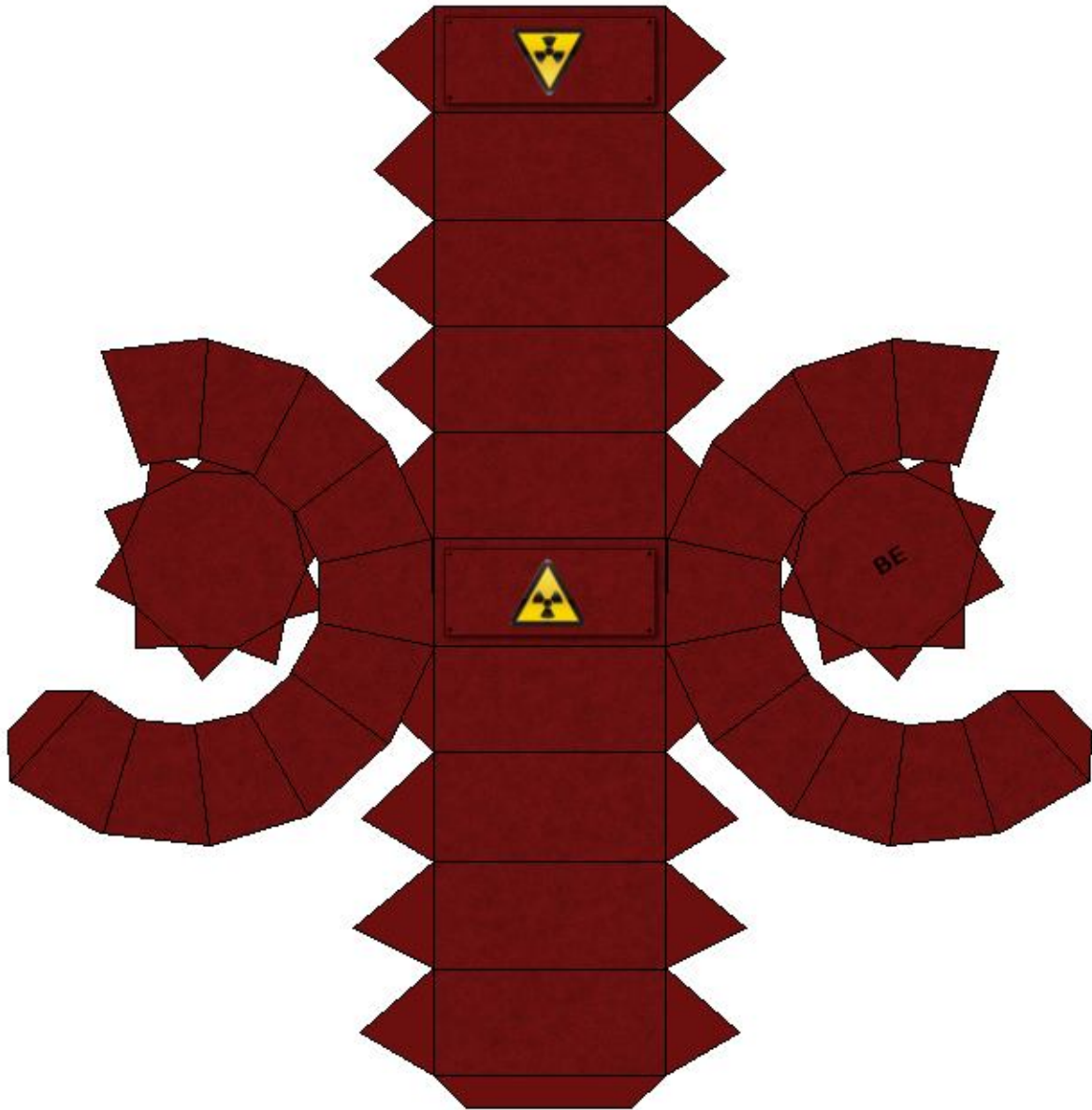
Glue to
Forward
Section
"B"

Glue to
Rear
Section
"D"

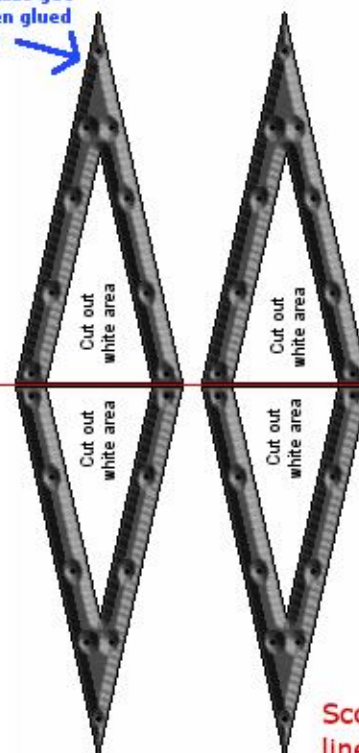
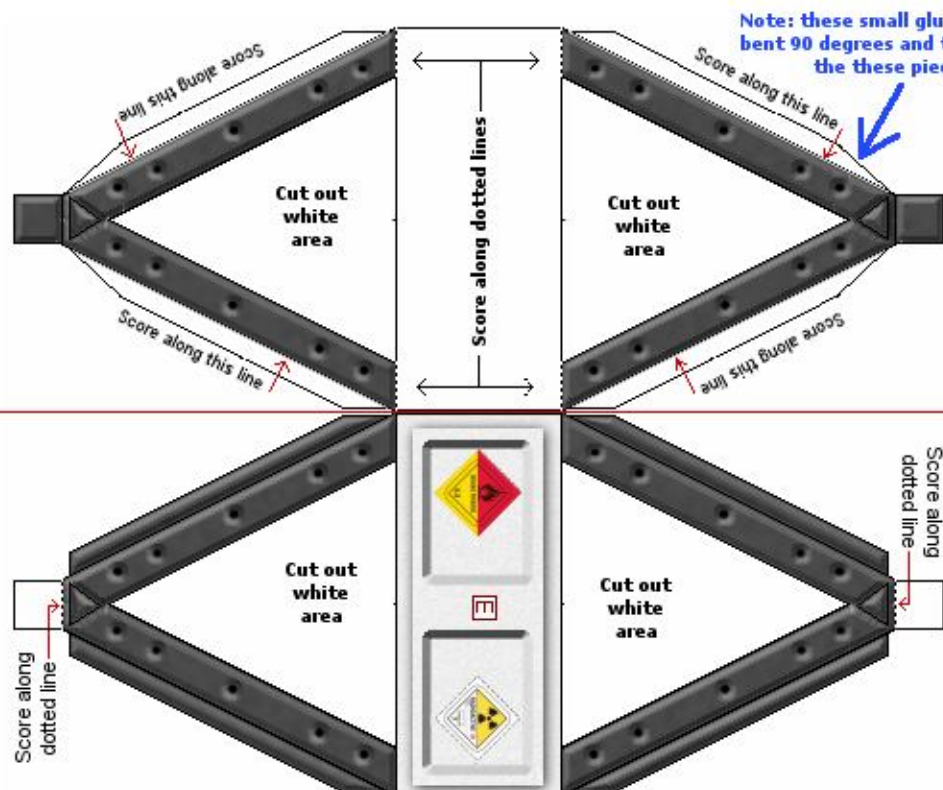


See photos for
placement of these
re-enforcers

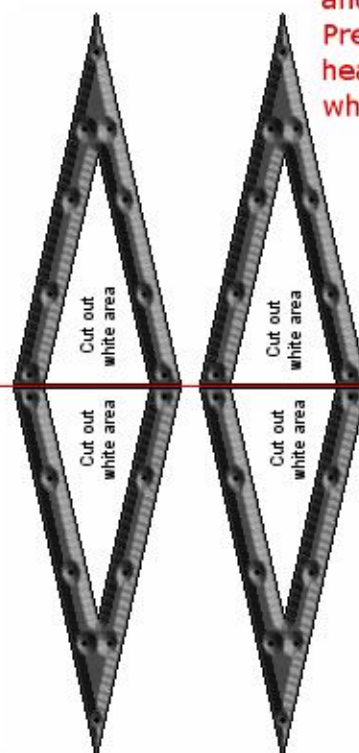
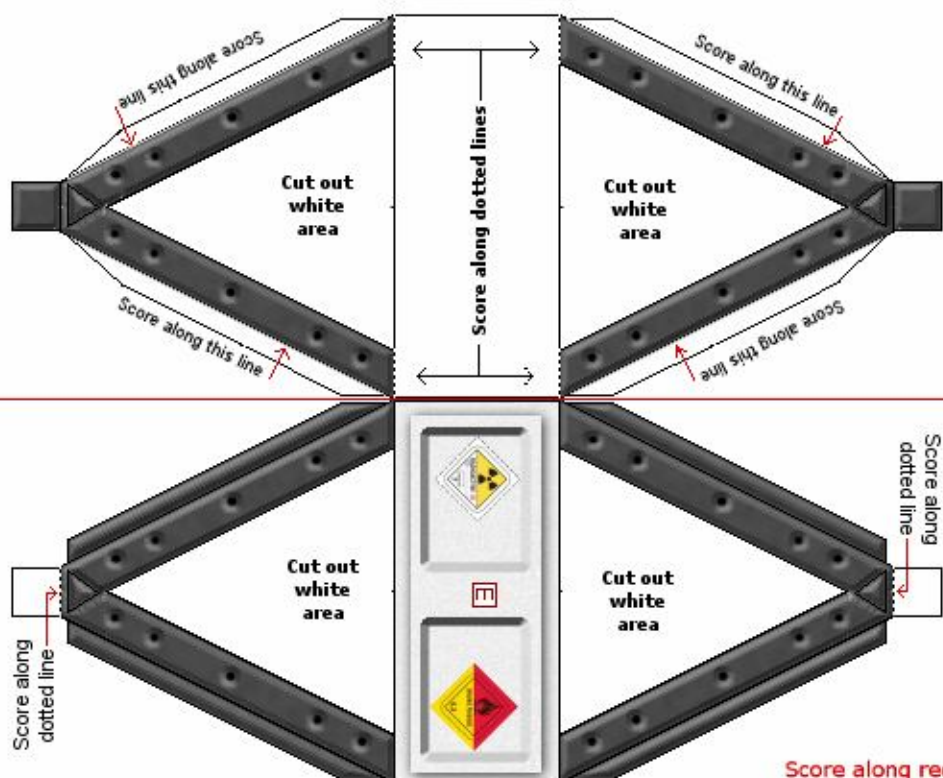
Main Engine



By Tommygun



Score along red lines, then fold and glue.
Press flat with heavy object while glue dries.

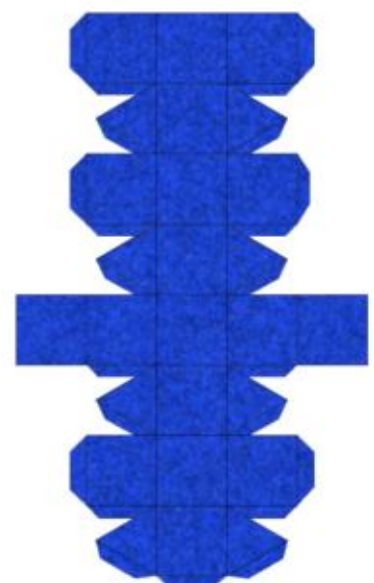
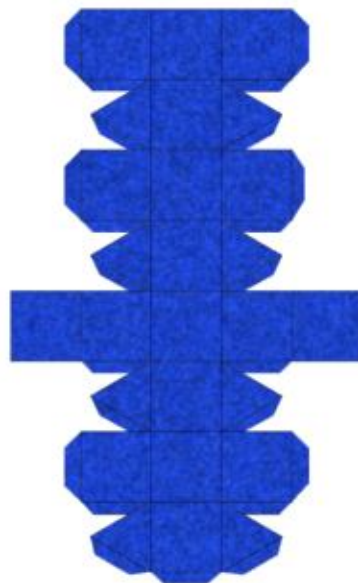
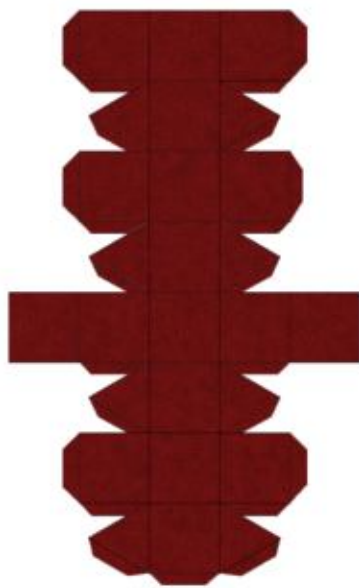
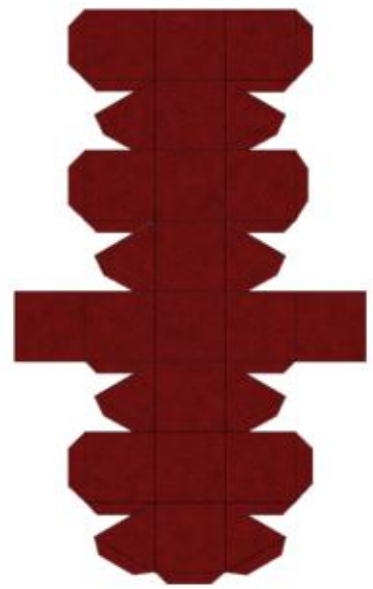
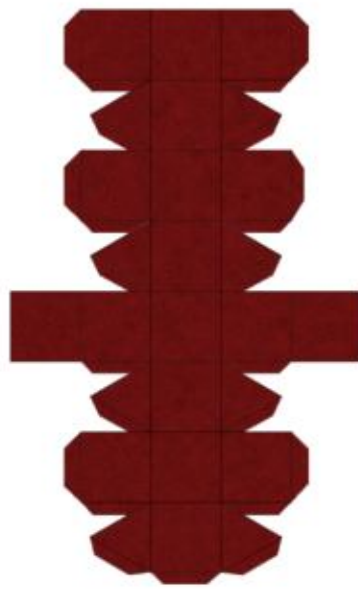
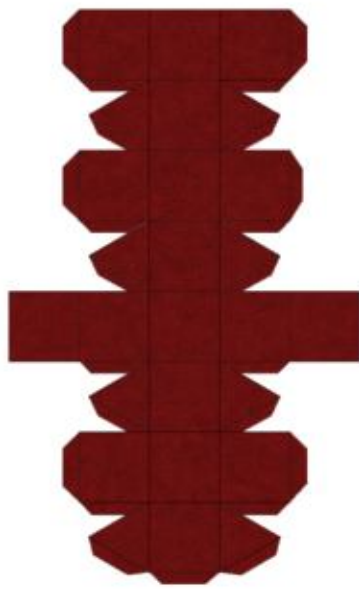


Score along red lines, then fold and glue.
Press flat with heavy object while glue dries.

By Tommygun



Engine Parts



Landing Gear Parts