

Cardboard Warriors

The paper miniatures wargaming forum

THE SHED

A SECRET HIDEOUT FOR MEDDLING KIDS



A COLLAPSABLE BUILDING FOR RPG AND TABLETOP GAMES

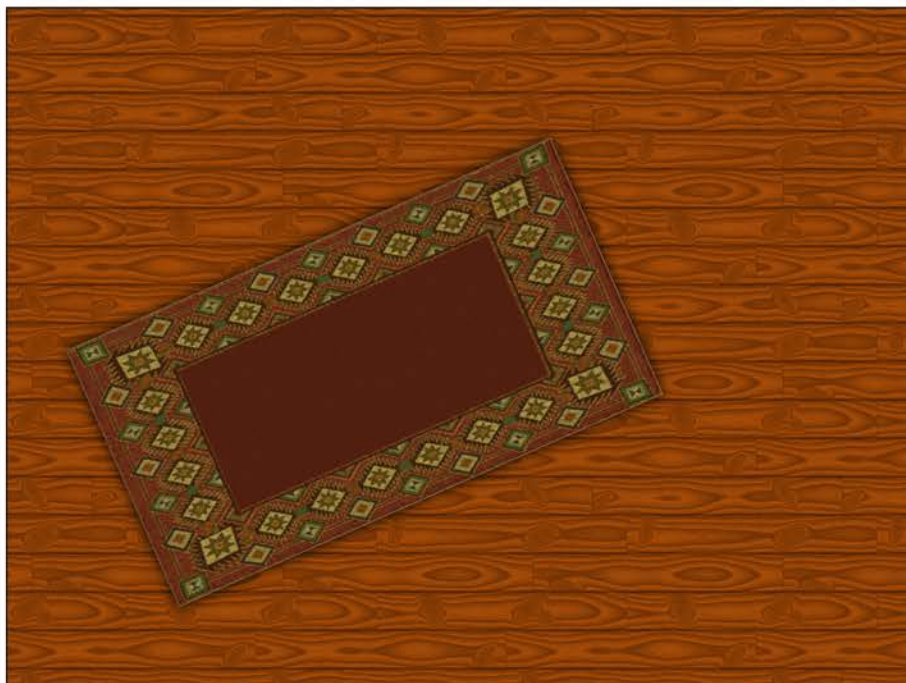
BUILDING (C) SHEP

MINIATURES (C) OKUMARTS, (MOD) SHEP

Cardboard Warriors

The paper miniatures wargaming forum

Floor



Long Wall

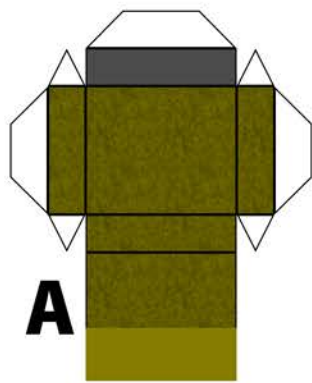
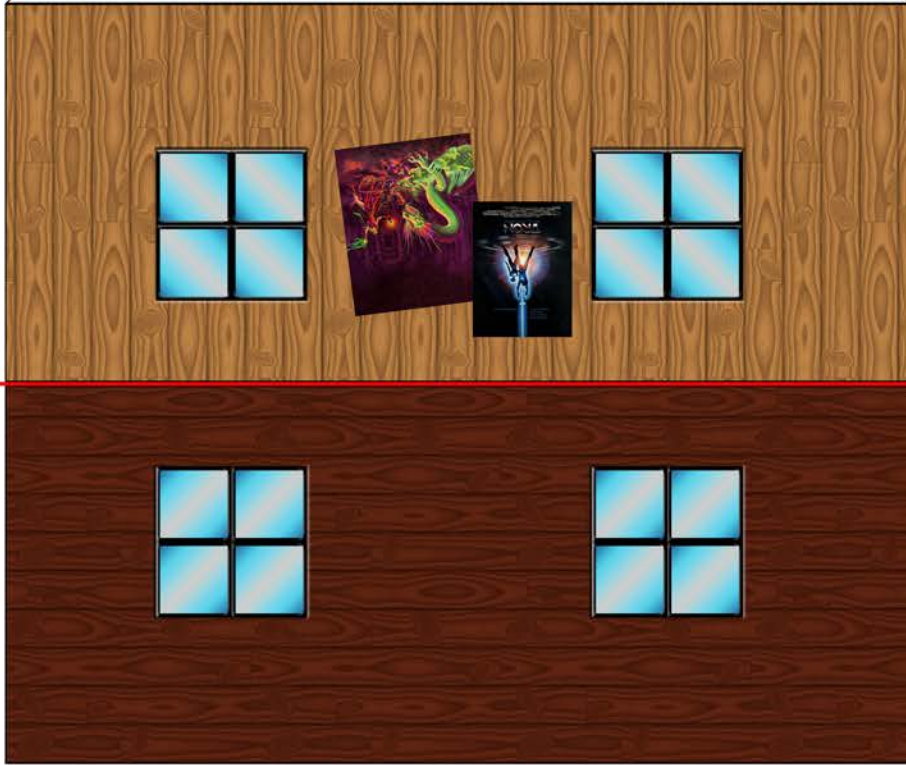
Cardboard Warriors

The paper miniatures wargaming forum

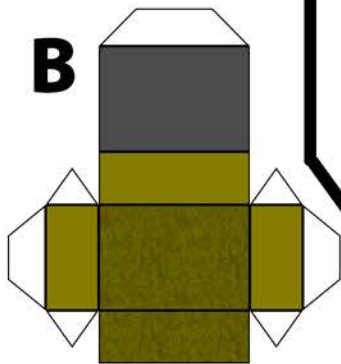
Meddling Kid



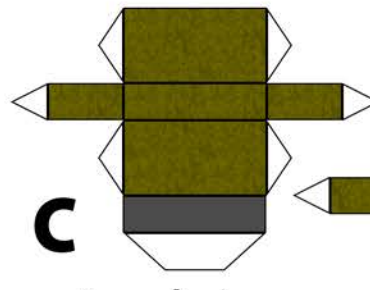
Long Wall



B

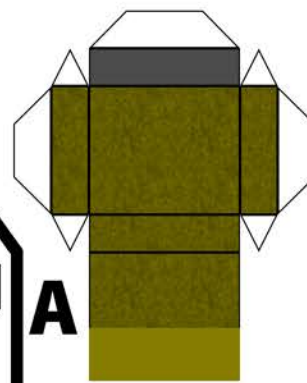


A

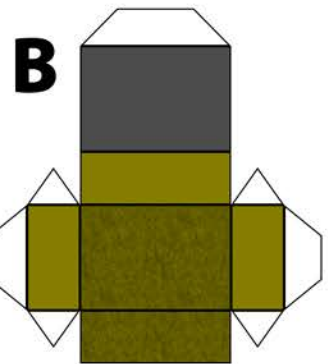


C

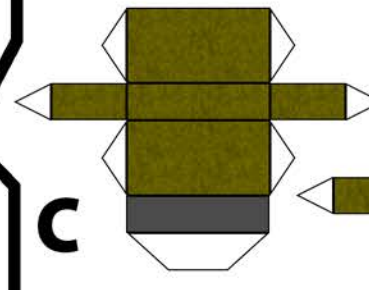
Armchair



A



B



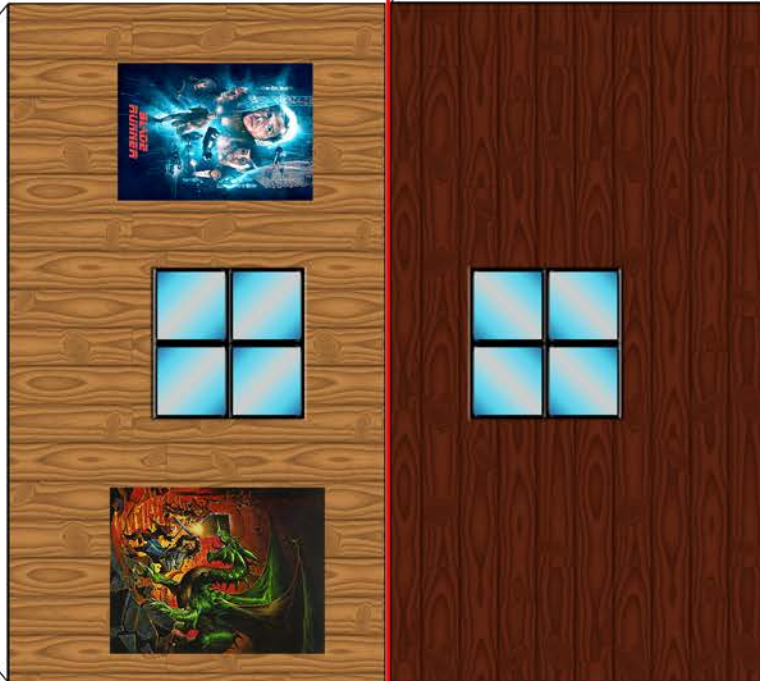
C

Armchair

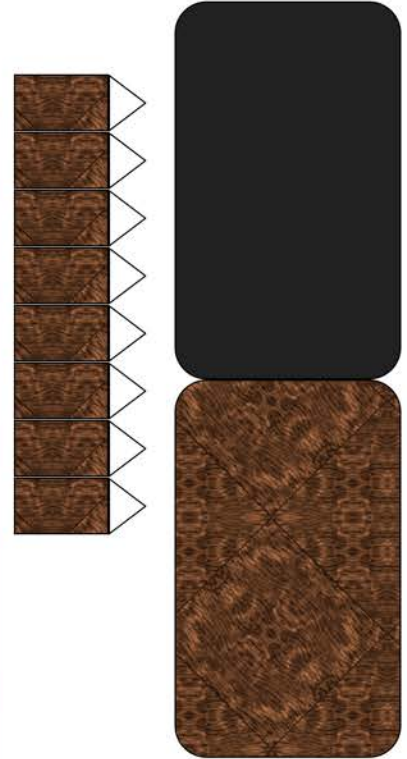
Cardboard Warriors

The paper miniatures wargaming forum

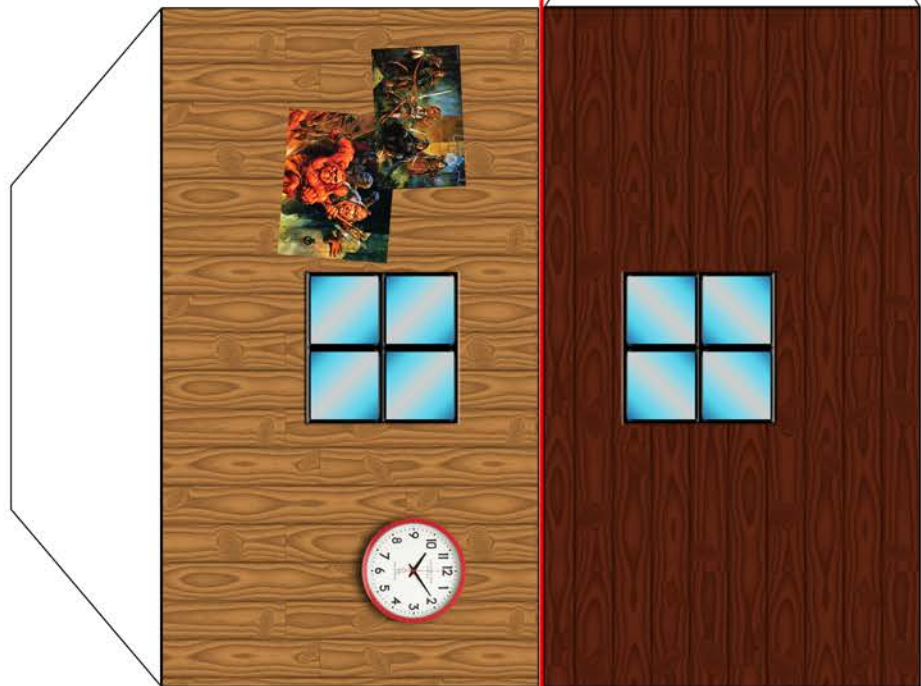
Short Wall



Empty Table



Meddling Kid

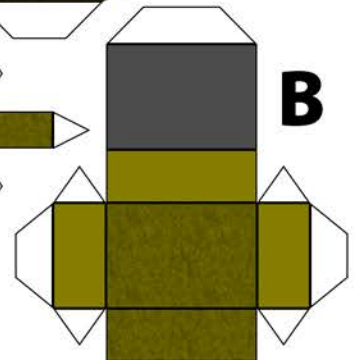
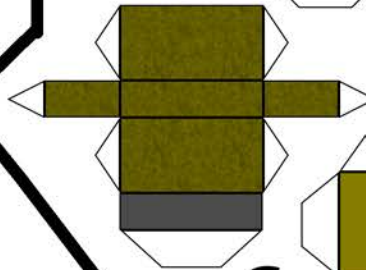
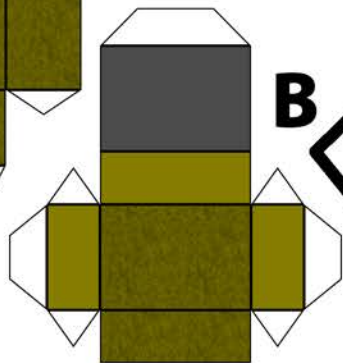
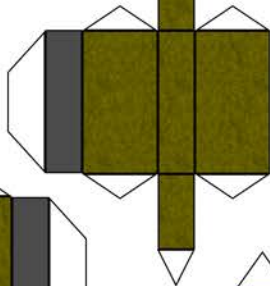
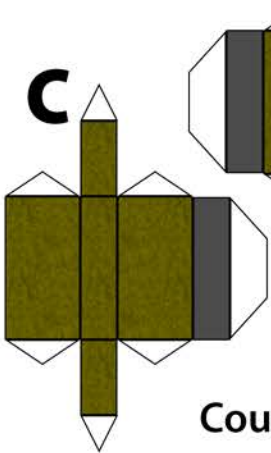
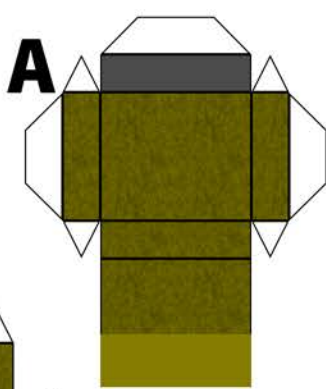
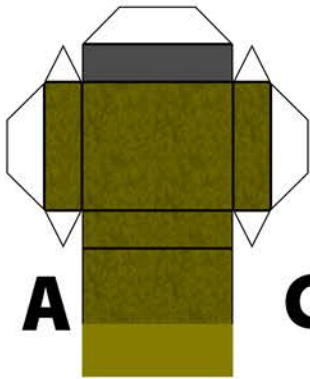
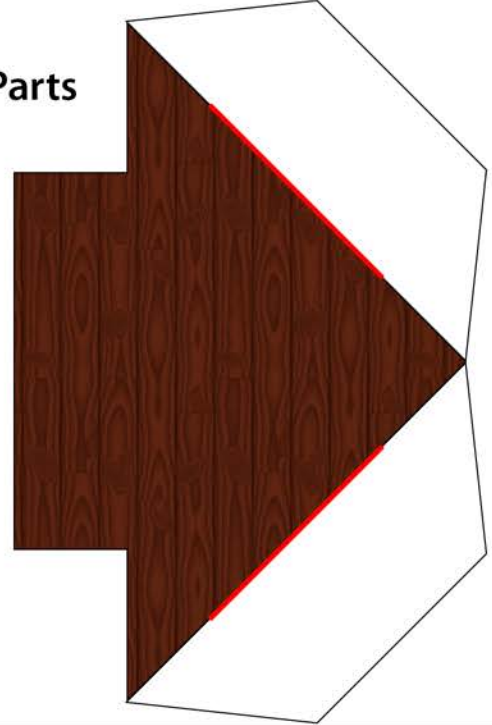
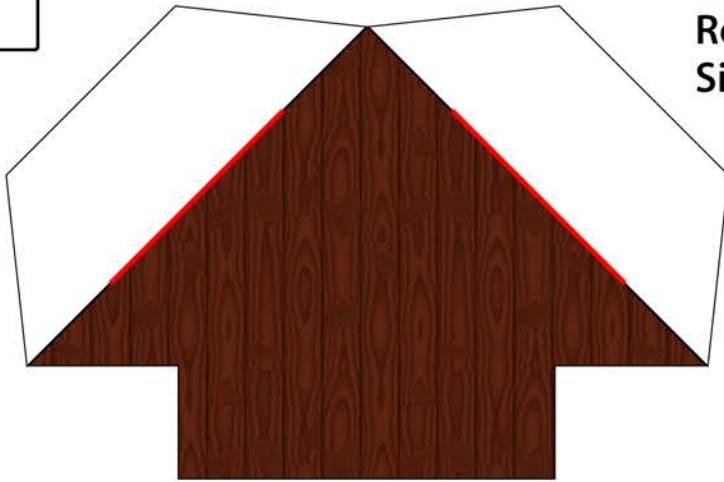


Short Wall

Cardboard Warriors

The paper miniatures wargaming forum

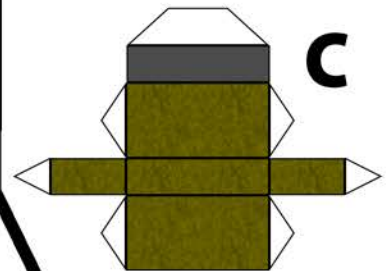
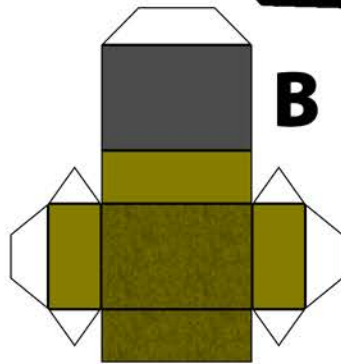
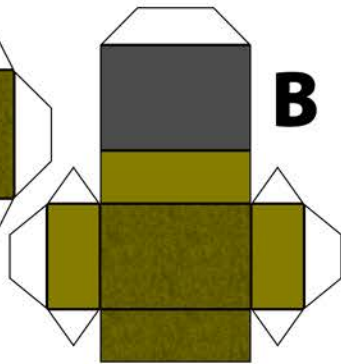
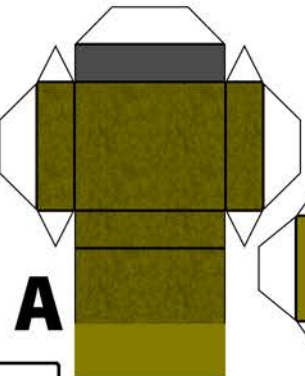
Roof,
Side Parts



C

Couch

Armchair



A

B

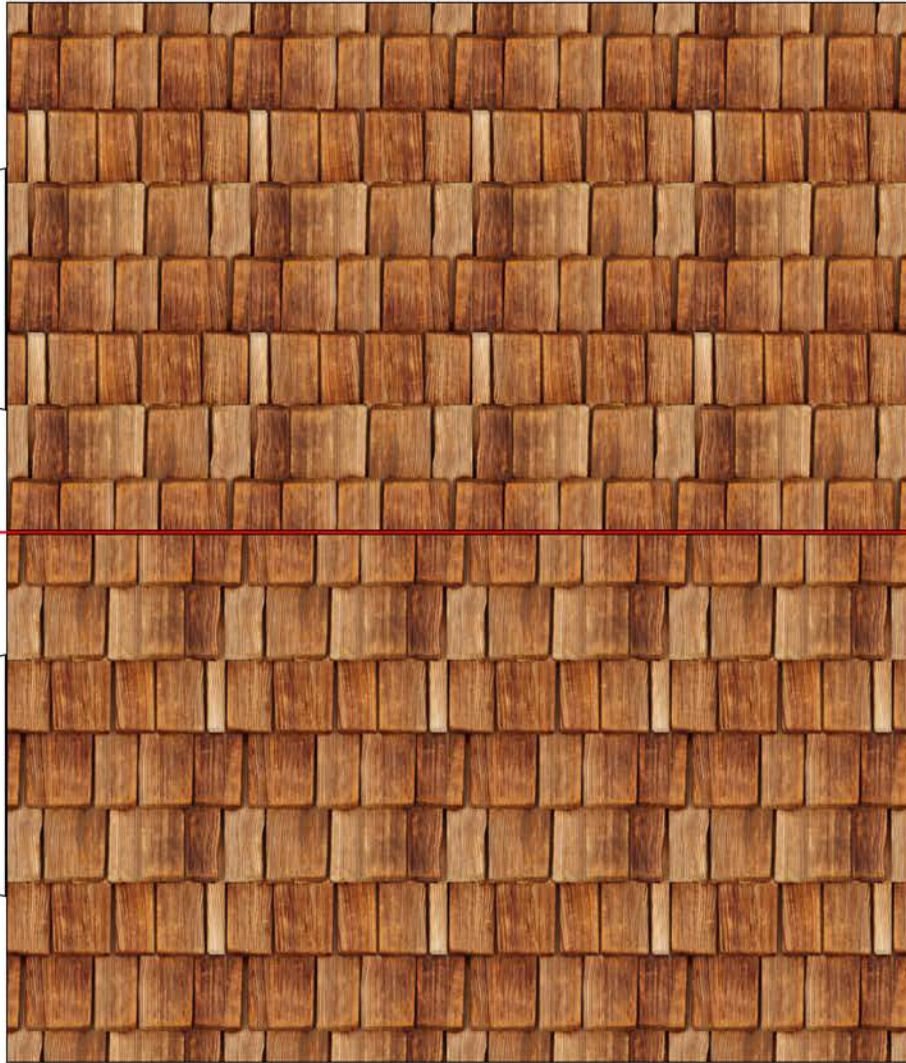
B

C

Cardboard Warriors

The paper miniatures wargaming forum

Roof



Meddling Kids



© DAVID OKUM 2017



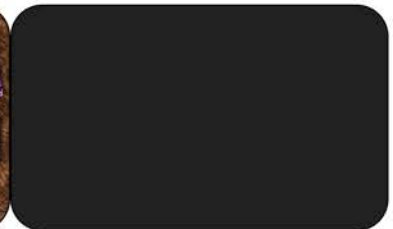
© DAVID OKUM 2017



DM Screen

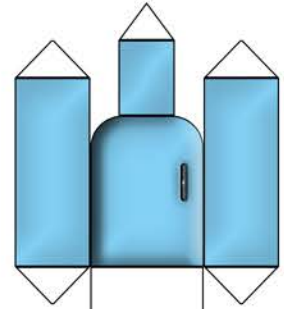


D&D Table



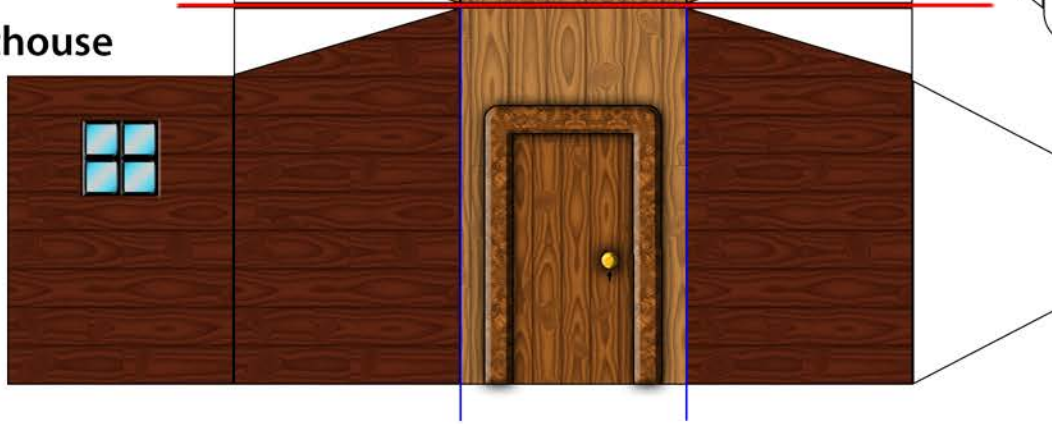
Cardboard Warriors

The paper miniatures wargaming forum

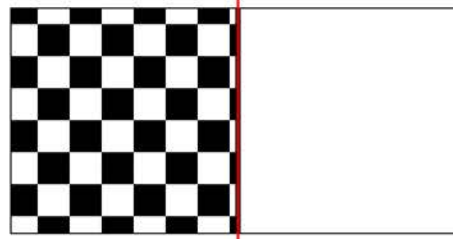


Fridge

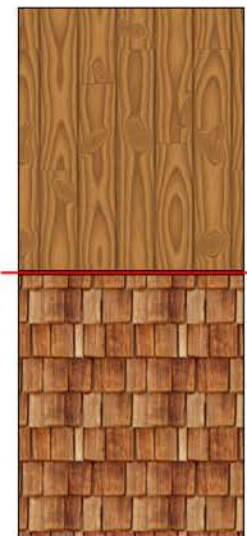
Outhouse



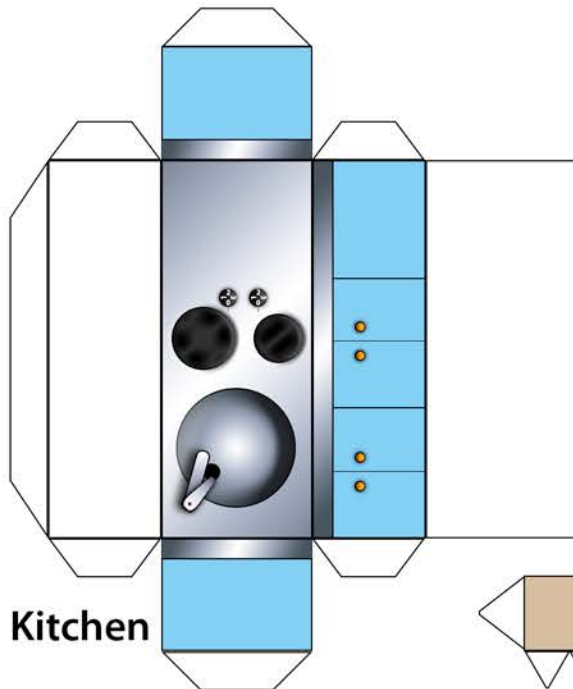
Outhouse Floor



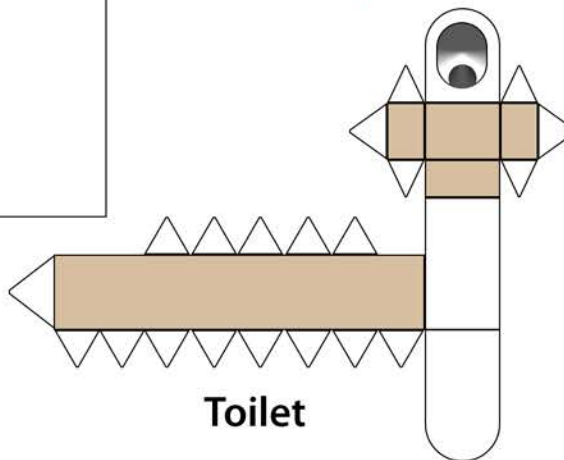
Outhouse Roof



Kitchen



Toilet



Cardboard Warriors

The paper miniatures wargaming forum

ASSEMBLY INSTRUCTIONS



Start by printing out the six pages of The Shed. The entire build is divided into several parts: the main building, the outhouse, the furniture, and the miniatures. Building the minis is not covered in these instructions. They were originally designed by Okumarts, and you can find instructions on how to build his minis in each and every of his original sets.

The Outhouse



Cut out the outhouse along its outline, then score along the red line and cut along the blue lines. Fold the walls over and glue them together and the outhouse into a box shape, leaving the door walls unglued.



You should now have a small box with an open floor, roof flaps, and an unglued door wall. Fold the floor flaps inwards. Fold the roof flaps inwards, too, but not fully down.



Cut out the checkered floor and the toilet. Fold the floor over and glue it together. Build the toilet, carefully cutting along the outline and then carefully scoring every straight line.



Insert the floor into the outhouse, so that it rests on the floor flaps. Don't glue it there! Insert the toilet and position it towards the wall opposite the door wall.



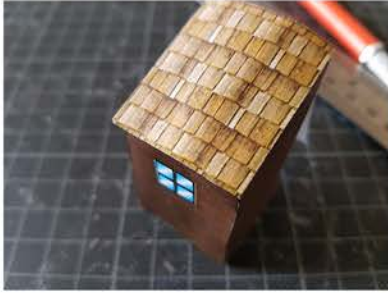
Cut out the roof, score it along the red line, and fold it over. When now glueing the roof, make sure that you only put glue along a strip in the middle of the roof, so that both sides are still open. This is very important, since you will otherwise not be able to slide the roof onto the roof flaps.

Cardboard Warriors

The paper miniatures wargaming forum

ASSEMBLY INSTRUCTIONS

The Outhouse (continued)



Slide the roof onto the outhouse, and put it aside to assemble the main building.

The Main Building



Cut out the walls and the floor of the main building along their outlines. Carefully score and fold over the walls along the red lines. Score and fold the floor and glue flaps to a 90° angle towards the inside of the building.



Glue the walls together to create the usual box shape. Glue the floor to a piece of sturdy cardboard or thin foamcore and trim to fit. Then take the outhouse and attach it to the main building by sliding its door wall over one of the walls of the shed.



Position the outhouse as you please, and insert the floor of the shed into the building. Since the floor should be slightly raised due to its cardboard or foam back, it will hold the door wall of the outhouse in position.



Continue with the roof. Cut the pieces out along their outlines. Score the roof along the center of its length and along the flaps.



Score and fold the flaps of the side pieces, then carefully cut the red lines with a knife. Insert the flaps of the roof into these slits.



The roof should now rest on the flaps of the side pieces. Insert the construction into the main building. The shed is basically finished.

Cardboard Warriors

The paper miniatures wargaming forum

ASSEMBLY INSTRUCTIONS

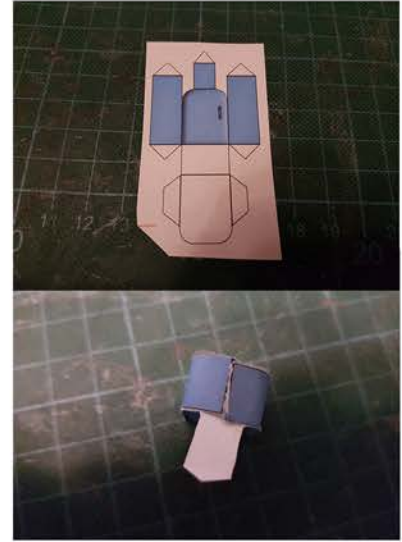
The Furniture



Let's start with the easiest piece: the table. Cut out the parts. Score the tabletop in the middle, fold it over, and glue it together. Score the stand along the black lines, and fold it in a zigzag way. Glue the inside, so you get an X with glue flaps on one end. Bend those outward.



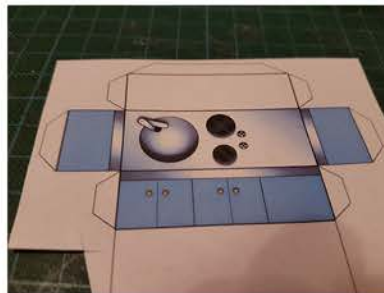
Glue the stand to the underside of the tabletop, and your table is finished. There are two table variations in this set, one with an empty top, and one with a nice game of D&D going on. For the second version, a DM screen is included, too.



Next, build the fridge. Cut it out along the outlines, and build the box. Close the top by glueing together the outside of the glue flaps of the sides of the fridge, so that their tips point inside the box.



Put glue on the inside of the blue piece that sticks up from the fridge's front, and put glue on the outside of said piece's little white flap. Bend the piece over the seam of the sides and insert its flap into the fridge, hiding the seam of the sides.



Build the kitchen by cutting it out and carefully scoring along the black lines.



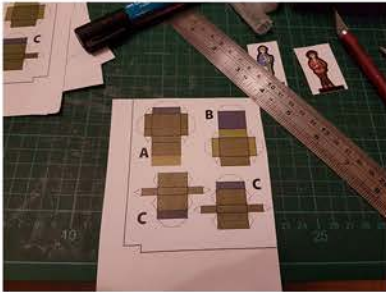
Glue the kitchen into its box shape.

Cardboard Warriors

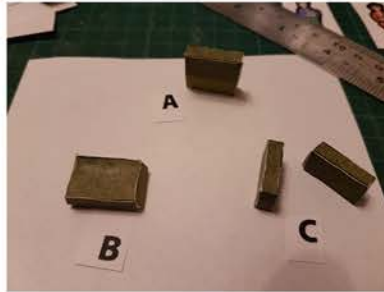
The paper miniatures wargaming forum

ASSEMBLY INSTRUCTIONS

The Furniture (continued)



There are three armchairs and a couch included in this set. However, these instructions only cover building an armchair, since the couch is build likewise. Cut out the four pieces of an armchair and score them along the black lines.



Build these pieces individually, then assemble the armchair. If you want to build the couch, you will find that it consists of three backs (A), three seats (B), and two armrests (C).



Glue the seat (B) to the back (A). Then glue an armrest (C) to either side. For the couch, create three combinations of back and seat, and glue those together at the sides. Attach the armrests on both outsides.



Once you finished the archairs and the couch, you may furnish the shed as you please. The buliding is collapsible and can thus be stored fold-flat. The furniture, however, does not fold flat and needs to be stored in a small box.

Finally, your meddling kids have a place to meet, hang out, plan their adventures, and hide from nosy adults...

