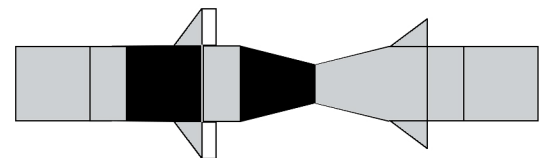
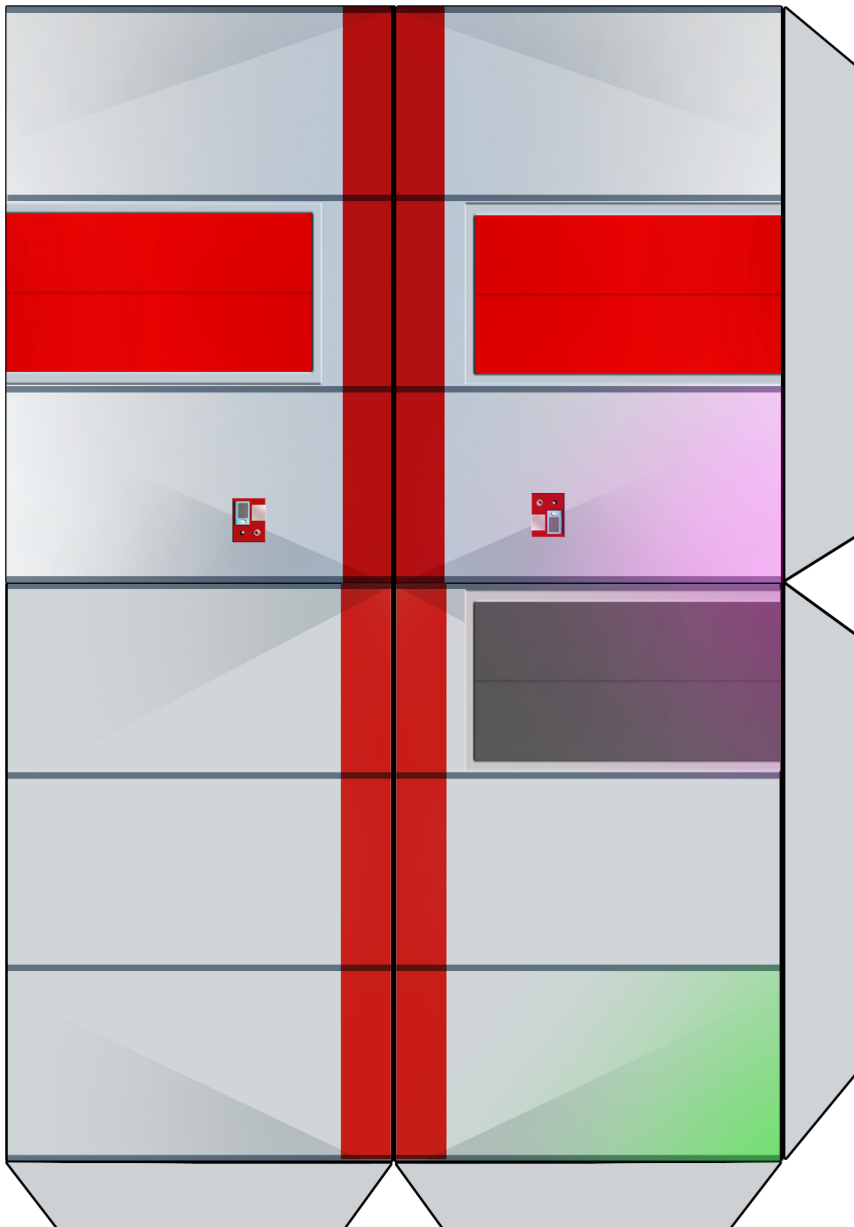
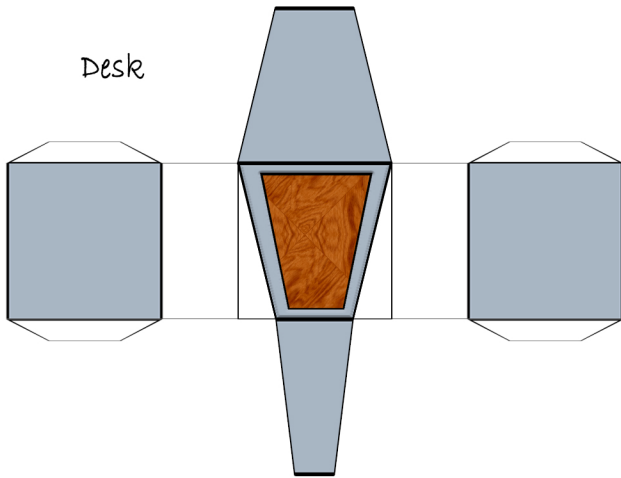
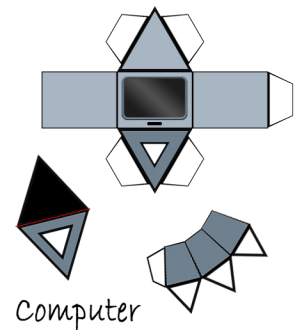
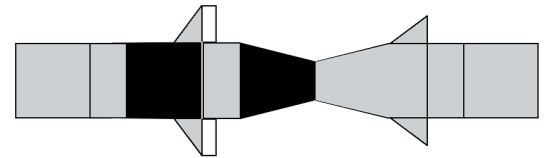


Desk



Chairs

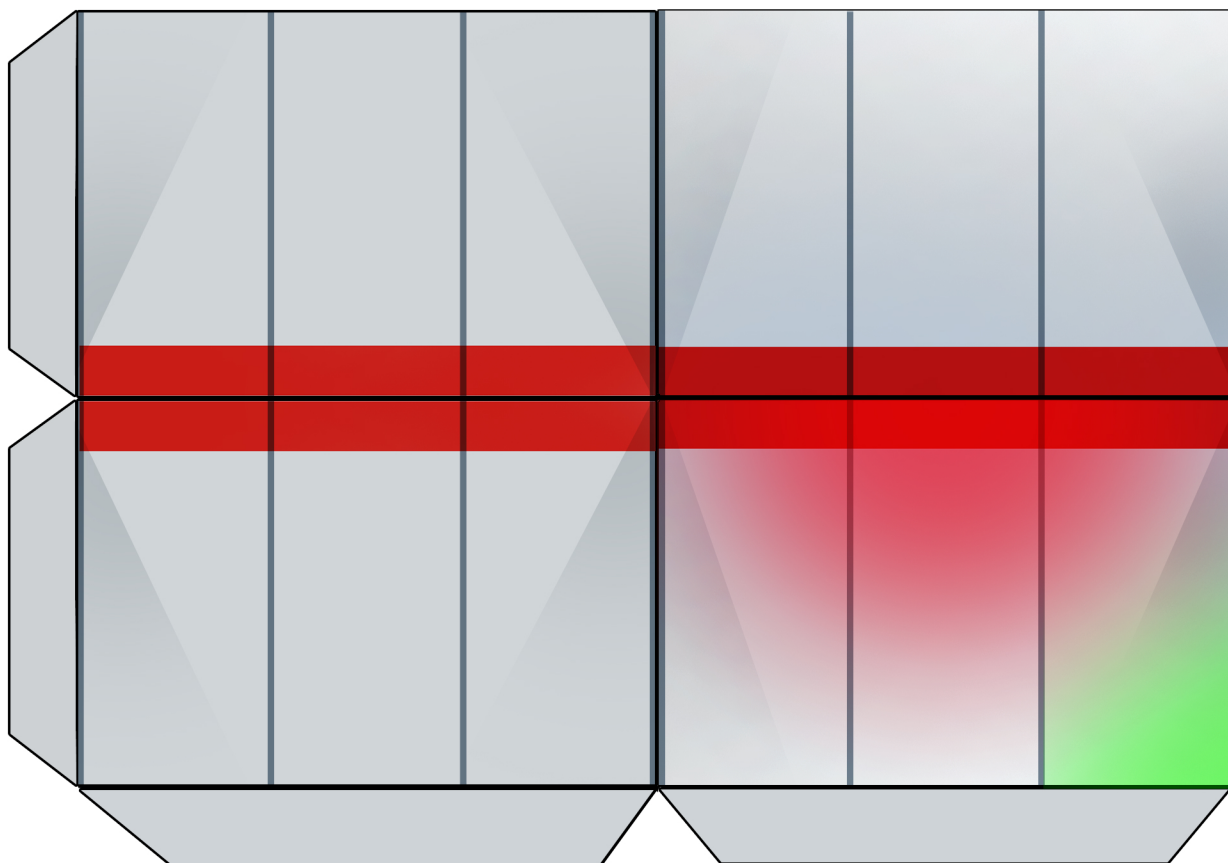
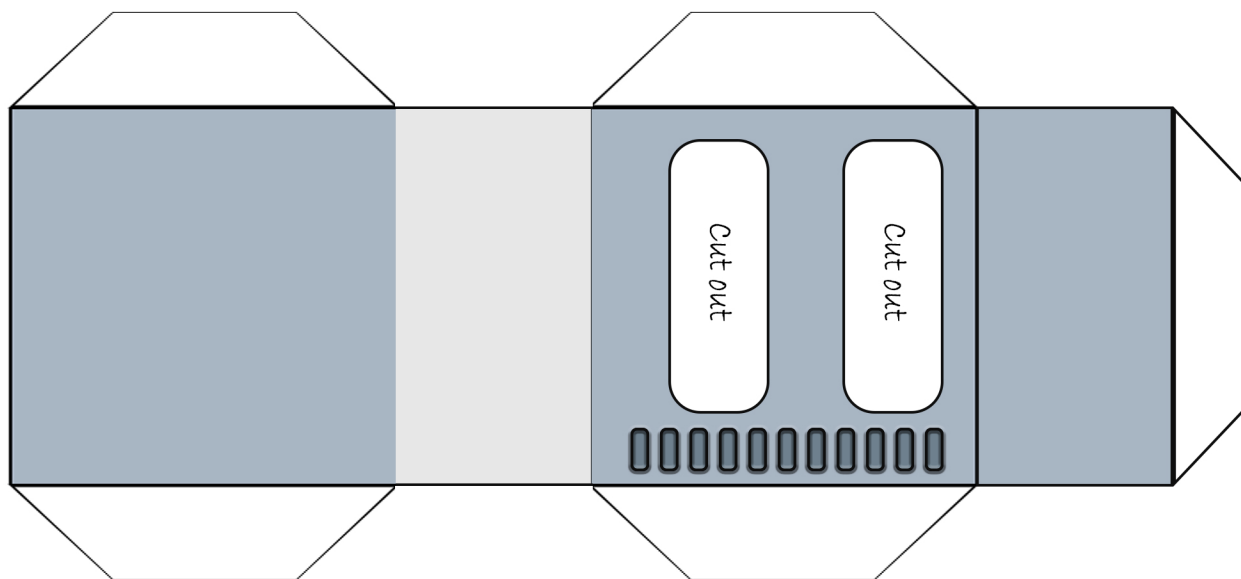


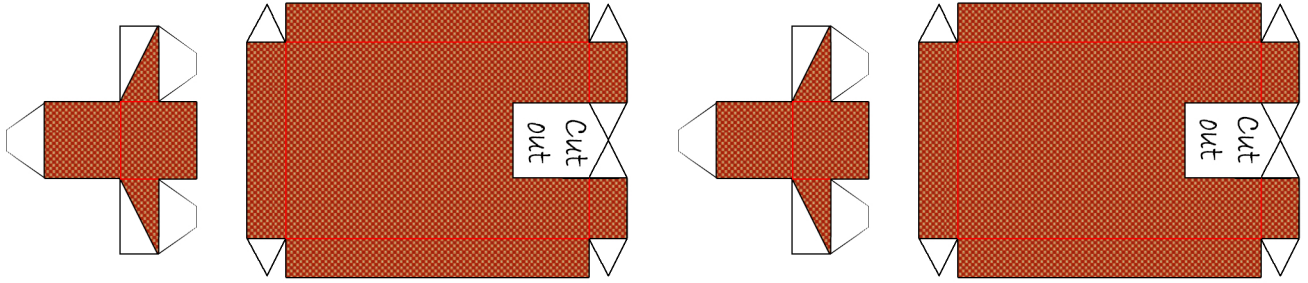
Computer

WNMHGB - Modular Starship/Space
Station Corridors and Rooms

- Crew Quarters -

for use with 28 to 32 mm miniatures





Room Assembly

Glue the two wall parts together, bend the floor flaps inwards, and insert the floor.

Furniture Assembly

Computer: Build monitor, cut out the small white triangle in the bottom. Build the stand. Plug monitor onto stand.

Chairs: Simply fold the body of a chair along the red lines. The small glue flaps belong to the triangle side parts. Fold the triangles with the flaps up and glue the flaps in between the front and back of the chair's back rest. Fold the outer triangles forward and glue them to their counterparts. Being a standee, the chair needs a base.

Desk: Fold the side parts under and glue them together, so that the grey part runs down the middle. Fold the glue flaps outward and glue them to the fold down upper and lower end. Trim off all white edges.

Bunk Bed: Cut out the pieces and build the pillows and blankets first. Then build the box frame the following way: Fold the front, bottom, back, and top into an open (sides) box shape and glue it together. Insert the blankets into the open box from one of the sides, with the upper edge of the blankets at the same height as the lower edge of the front cut-outs, glueing them into the box at the same time. Insert the sides, glueing them into the box, and you're done.

